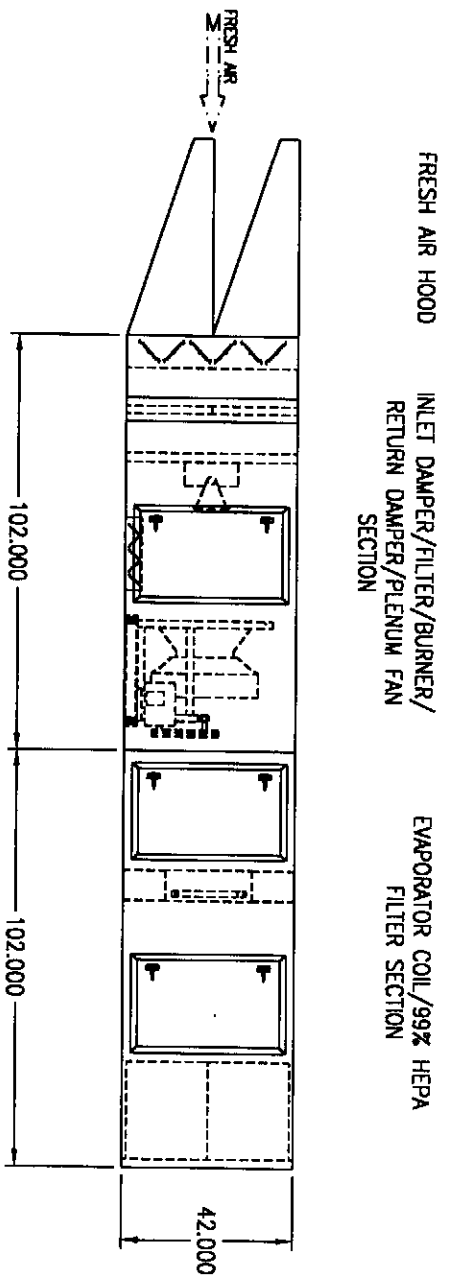
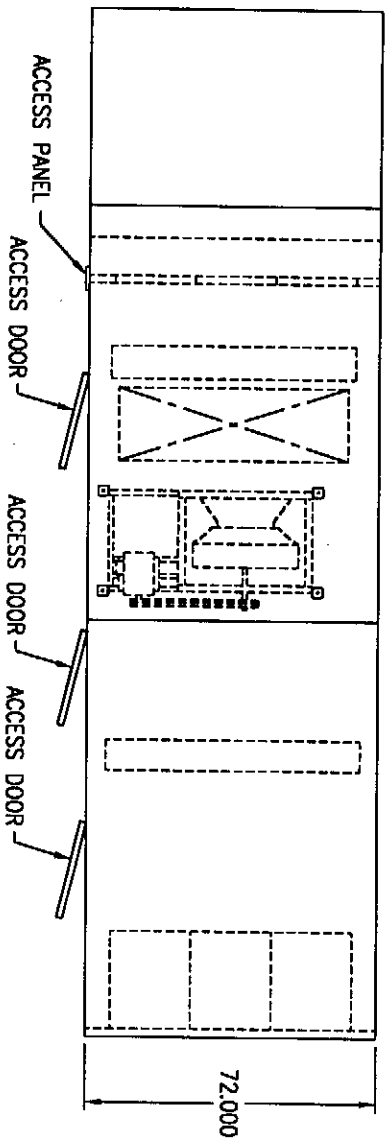


REV	DESCRIPTION	DATE	BY

MODEL  
 CAR 75  
 (SEE SUBMITTAL COVER SHEET FOR UNIT SPECIFICATIONS)

STANDARD FEATURES  
 FACTORY TESTED  
 16 GAUGE CASING  
 LUBRICATED BEARINGS W/ ZIRK FITTINGS  
 HEAT & RUST RESISTANT EXTERIOR FINISH



NOTES:  
 1) DRAWING IS NOT TO SCALE  
 2) DUE TO SHIPPING REQUIREMENTS, SOME ELECTRICAL RECONNECTION MAY BE NECESSARY.

PRELIMINARY - NOT FOR CONSTRUCTION

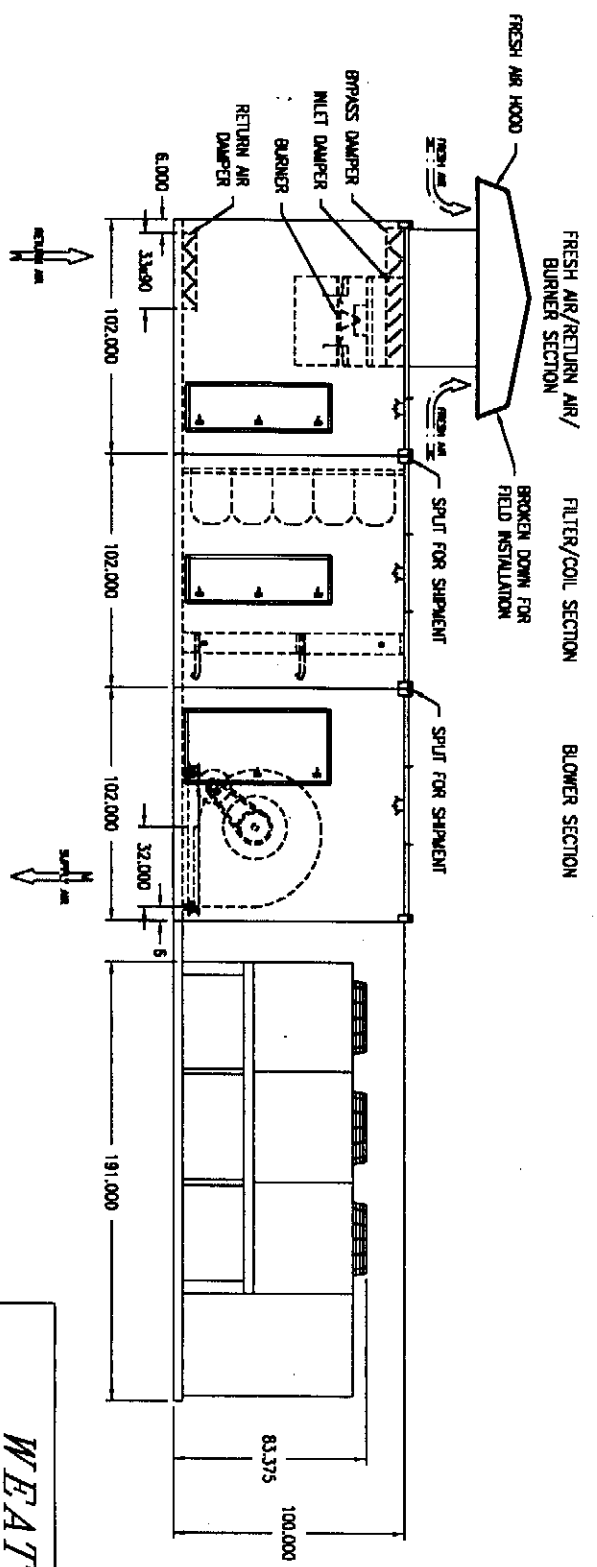
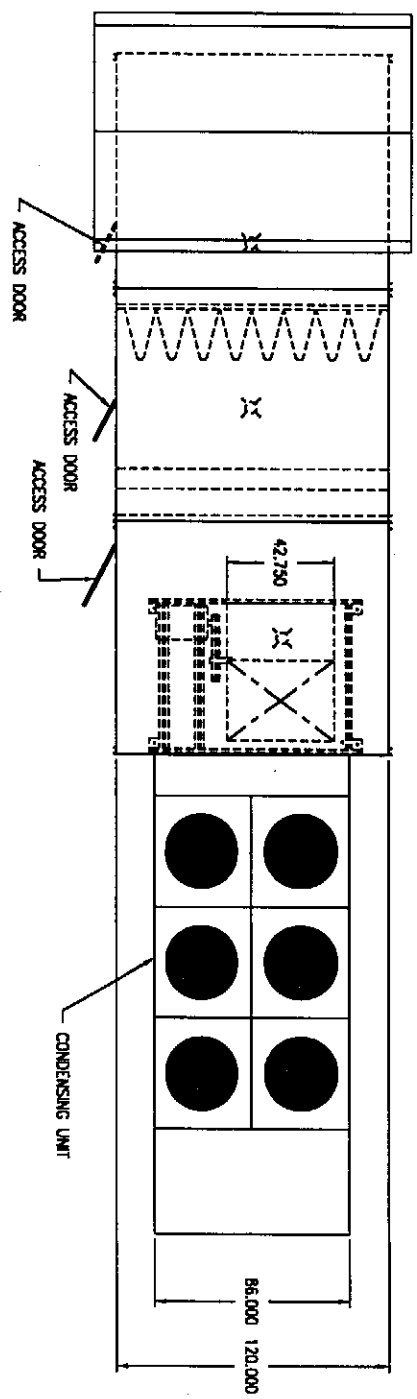
**WEATHER-RITE**  
 HEATING AND VENTILATION, INC.

DRAWN BY: SJA	INSTALLATION DIMENSIONS	C-690001-88	REVISION
DATE: 9/12/00			

SHEET 1 OF 1

REV	DESCRIPTION	DATE

MODEL  
 CAR 350 HB OUTDOOR  
 (SEE SUBMITTAL COVER SHEET FOR UNIT SPECIFICATIONS)



PRELIMINARY

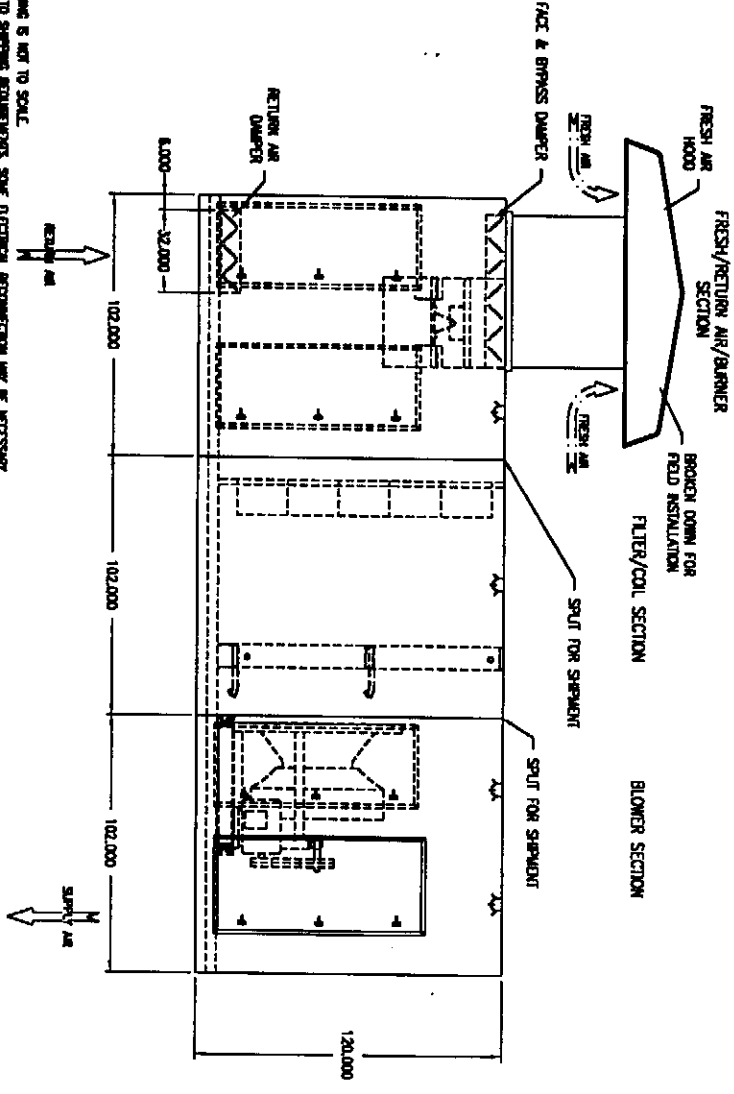
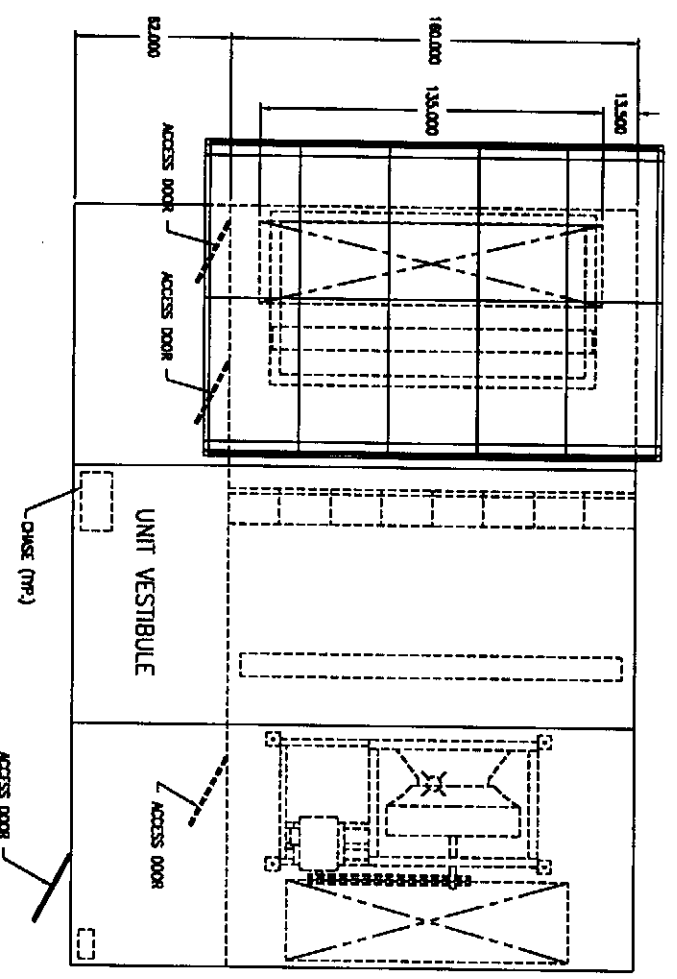
- NOTE:
- 1.) DRAWING IS NOT TO SCALE.
  - 2.) THIS SUBMITTAL IS ONLY APPLICABLE TO DIRECT FIRED BURNER.
  - 3.) DUE TO SHIPPING REQUIREMENTS SOME ELECTRICAL RECONNECTION MAY BE NECESSARY.

<b>WEATHER-RITE</b>		HEATING AND VENTILATION, INC.
INSTALLATION DIMENSIONS		
DRAWN BY: SAM	DATE: 11/05/99	REVISION
C-690001-71		SHEET 1 OF 1

REV	DESCRIPTION	DATE	BY

MODEL  
 CAR 650  
 (SEE SUBMITTAL COVER SHEET FOR UNIT SPECIFICATIONS)

STANDARD FEATURES  
 FACTORY TESTED  
 16 GAUGE CASING  
 LUBRICATED BEARINGS W/ ZIRK FITTINGS  
 HEAT & RUST RESISTANT EXTERIOR FINISH



NOTES  
 1) DRAWING IS NOT TO SCALE  
 2) GO TO SHIPPING REQUIREMENTS FOR ELECTRICAL REQUIREMENTS AND RE CONNECTIONS

<b>WEATHER-RITE</b> HEATING AND VENTILATION, INC.		DRAWN BY: SJA DATE: 9/29/79	REGION
		INSTALLATION DIMENSIONS	C-690001-69 SHEET 1 OF 1