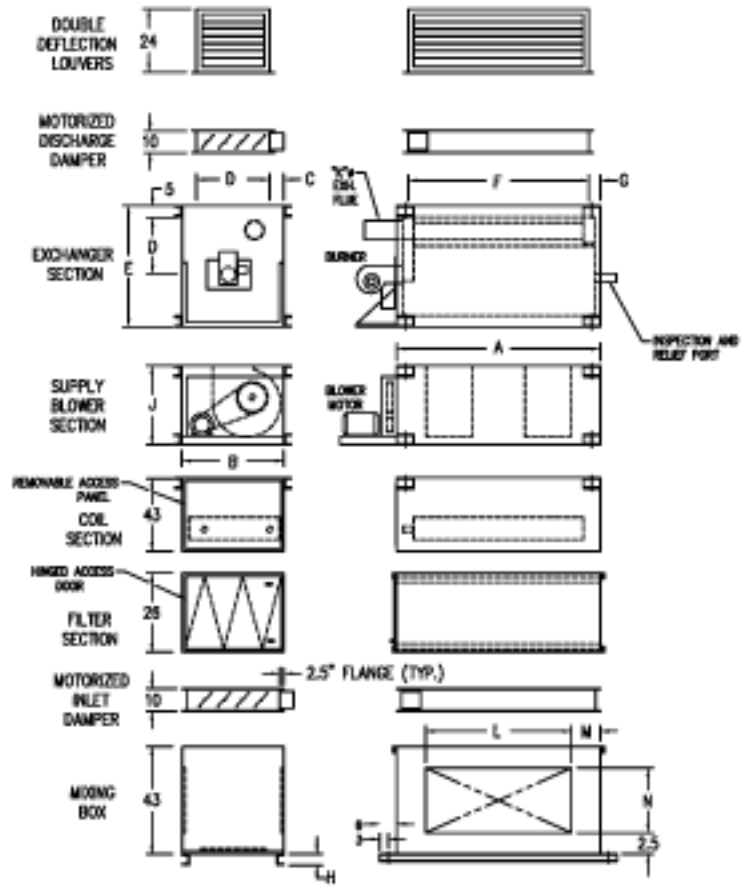


VERTICAL DIMENSIONS FOR INDIRECT FIRED UNITS  
 MODELS 150, 175, 200, 225, 250, 275, 300, 350, 400, 450

MODEL	A	B	C	D	E	F	G	H	J	K	L	M	N
0150/175	100	30	8.5	36	75	90	5	3	40	12	90	5	36
0200/225	118	32	8.5	36	75	106	8	3	58	12	96	10	36
0250/275/300	118	30	4.5	31	90	100	8	4	55	14	96	10	36
0350/400/450	160	25	8	56	125	150	5	4	60	18	140	10	36

MODEL	FILTER SIZE and QTY.
0150/175	24" x 24" x 1"
0200/225	24" x 24" x 1"
0250/275/300	24" x 24" x 1"
0350/400/450	24" x 24" x 1"

- NOTE:  
 1. DRAWING IS NOT TO SCALE. DIMENSIONS ARE SUBJECT TO CHANGE WITHOUT NOTICE.  
 2. SUGGESTED MOUNTING HEIGHT OF OUTDOOR UNIT IS 30" MINIMUM FROM ROOF SURFACE TO BOTTOM OF UNIT.  
 3. ON OUTDOOR UNITS A LOUNDED VESTIBULE IS ADDED TO THE BURNER AREA. ALL OTHER COMPONENTS HAVE A WEATHERIZED ENCLOSURE.  
 4. FILLIC VENT, CHIMNEY, AND CHP REQUIRED ON ALL UNITS. (SUPPLIED BY OTHERS)



**Installation Code and Annual Inspections:**

All installations and service of WEATHER-RITE™ products must be performed by a contractor qualified in the installation and service of products sold and supplied by Weather-Rite, LLC and conform to all requirements set forth in the WEATHER-RITE™ manuals and all applicable governmental authorities pertaining to the installation, service and operation of the equipment. To help facilitate optimum performance and safety, Weather-Rite, LLC recommends that a qualified contractor annually inspect your WEATHER-RITE™ products and perform service where necessary, using only replacement parts sold and supplied Weather-Rite, LLC.

**This document is intended to assist licensed professionals in the exercise of their professional judgement.**