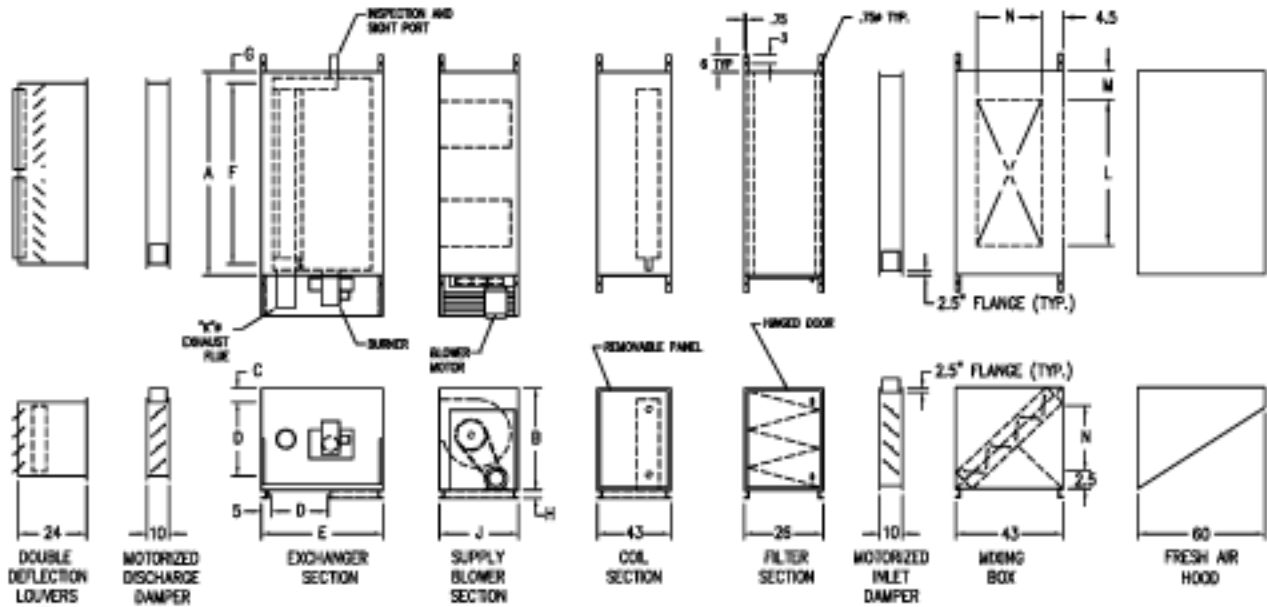


- NOTE:
1. DRAWING IS NOT TO SCALE. DIMENSIONS ARE SUBJECT TO CHANGE WITHOUT NOTICE.
 2. SUGGESTED MOUNTING HEIGHT OF OUTDOOR UNIT IS 24" MINIMUM FROM ROOF SURFACE TO BOTTOM OF UNIT.
 3. ON OUTDOOR UNITS A LOUVERED RESSALE IS ADDED TO THE BURNER AREA. ALL OTHER COMPONENTS HAVE A WEATHERIZED ENCLOSURE.
 4. FLUE VENT, CHIMNEY, AND CAP REQUIRED ON ALL UNITS. (SUPPLIED BY OTHERS)

HORIZONTAL DIMENSIONS FOR INDIRECT FIRED MODELS 150, 175, 200, 225, 250, 275, 300, 350, 400, 450

MODEL	A	B	C	D	E	F	G	H	J	K	L	M	N	FILTERS
E150/175	100	55	6.5	38	75	90	5	3	42	12	90	5	25	24" W x 18" H
E200/225	118	55	6.5	38	75	100	5	3	55	12	98	10	25	24" W x 18" H
E250/275/300	138	60	4.5	51	90	100	5	4	55	14	98	10	30	24" W x 18" H
T300/400/450	160	72	8	58	102	100	5	4	60	18	140	10	30	24" W x 18" H



Installation Code and Annual Inspections:

All installations and service of WEATHER-RITE™ products must be performed by a contractor qualified in the installation and service of products sold and supplied by Weather-Rite, LLC and conform to all requirements set forth in the WEATHER-RITE™ manuals and all applicable governmental authorities pertaining to the installation, service and operation of the equipment. To help facilitate optimum performance and safety, Weather-Rite, LLC recommends that a qualified contractor annually inspect your WEATHER-RITE™ products and perform service where necessary, using only replacement parts sold and supplied Weather-Rite, LLC.

This document is intended to assist licensed professionals in the exercise of their professional judgement.