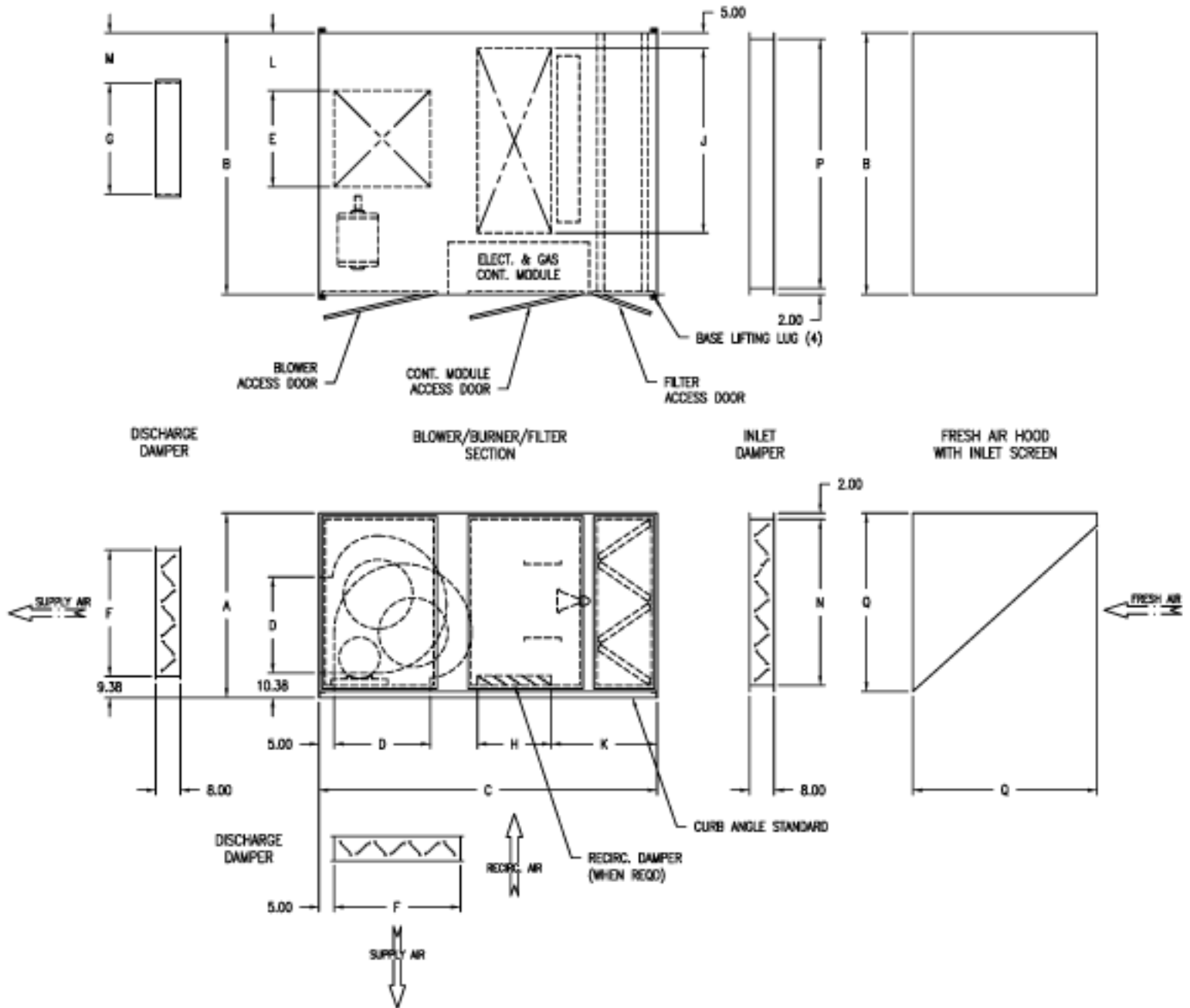


# HORIZONTAL UNITS



DIMENSIONS

MODEL	A	B	C	D	E	F	G	H	J	K	L	M	N	P	Q	FILTERS	QTY
ARXT, ARXTR 125	62	85	110	31.25	31.25	40	38	24	60	33	18.75	15.5	56	81	60	2x20x20 2x20x25	12 4
ARXT, ARXTR 130	72	98	120	36.75	36.75	40	38	27	73	33	22	21.5	66	94	70	2x20x25 2x18x25	16 4

**NOTES:**

1. DRAWING IS NOT TO SCALE. DIMENSIONS SUBJECT TO CHANGE WITHOUT NOTIFICATION.
2. HH AND HB ARRANGEMENTS ARE STANDARD. CONSULT FACTORY FOR OTHER ARRANGEMENTS.
3. UNITS SHOULD BE INSTALLED AT MINIMUM 24" FROM GROUND.
4. HB UNITS MAY CARRY OVER MOISTURE, DO NOT INSTALL OVER DAMAGE-ABLE MATERIALS.
5. ALL UNITS ARE PRE-PIPED, PRE-WIRED, AND FIRE TESTED PRIOR TO SHIPMENT.

**Installation Code and Annual Inspections:**

All installations and service of WEATHER-RITE™ products must be performed by a contractor qualified in the installation and service of products sold and supplied by Weather-Rite, LLC and conform to all requirements set forth in the WEATHER-RITE™ manuals and all applicable governmental authorities pertaining to the installation, service and operation of the equipment. To help facilitate optimum performance and safety, Weather-Rite, LLC recommends that a qualified contractor annually inspect your WEATHER-RITE™ products and perform service where necessary, using only replacement parts sold and supplied Weather-Rite, LLC.

This document is intended to assist licensed professionals in the exercise of their professional judgement.