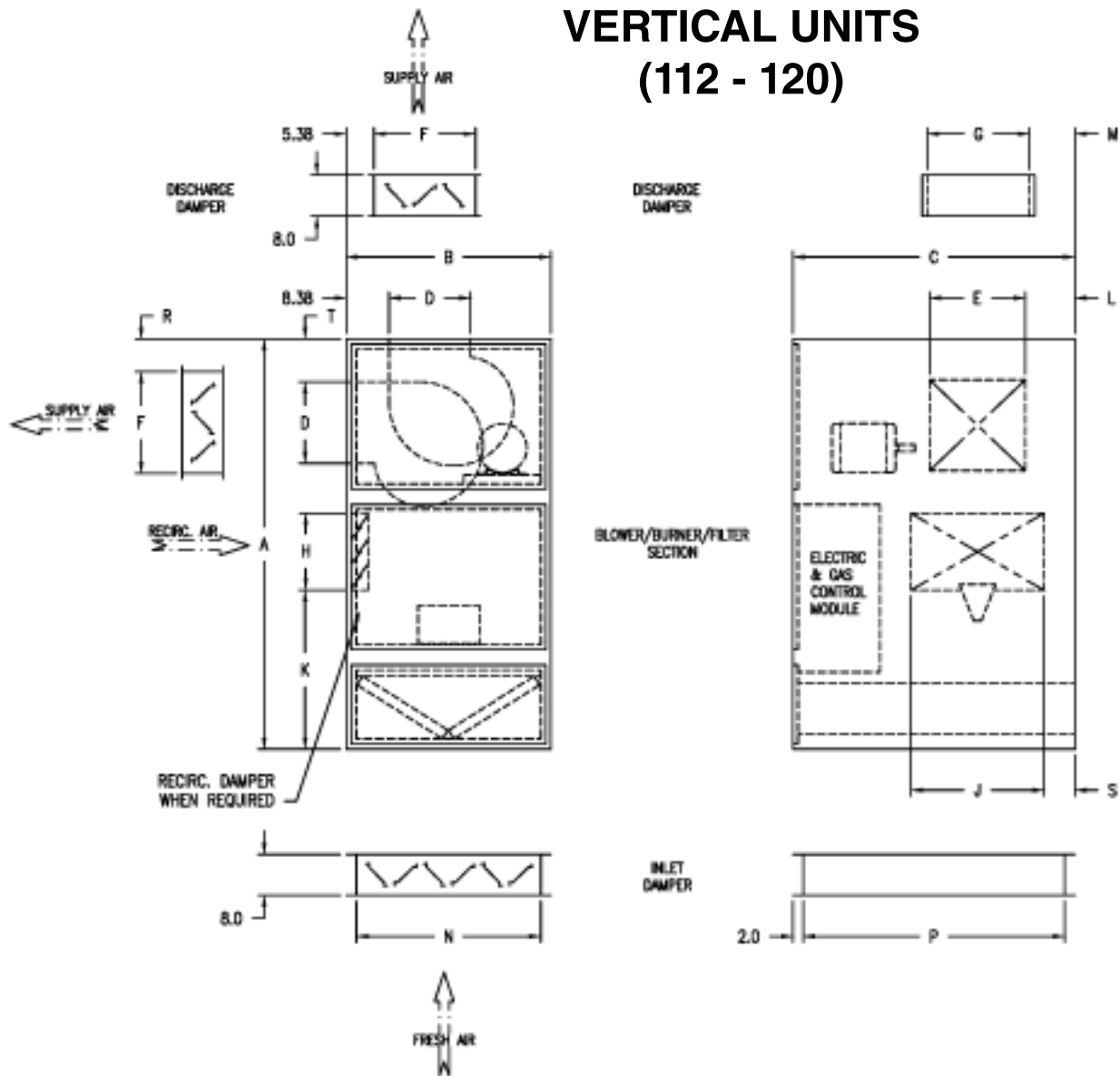


VERTICAL UNITS (112 - 120)



MODEL	DIMENSIONS																FILTERS	QTY	
	A	B	C	D	E	F	G	H	J	K	L	M	N	P	R	S			T
ARXT, ARXTR 112	70	40	50	13.44	15.62	19.5	26	15	26	27	9.25	4	36	46	4	4.5	6	2x20x25	4
ARXTM 112	80	40	50	13.44	15.62	19.5	26	n/a	n/a	n/a	9.25	4	36	46	4	n/a	6	2x20x25	4
ARXT, ARXTR 115	80	40	55	15.88	18.62	19.5	26	15	26	31	9.5	5.5	36	51	3	6	5	2x20x25	4
ARXTM 115	90	40	55	15.88	18.62	19.5	26	n/a	n/a	n/a	9.5	5.5	36	51	3	n/a	5	2x20x25	4
ARXT, ARXTR 118	90	40	55	18.88	21.88	19.5	26	20	30	31	9.5	7.5	36	51	5	6	5	2x16x25	8
ARXTM 118	100	40	55	18.88	21.88	19.5	26	n/a	n/a	n/a	9.5	7.5	36	51	5	n/a	5	2x16x25	8
ARXT, ARXTR 120	100	60	65	24.75	24.75	26	34	24	40	33	12	7	56	61	4	5	5	2x16x20	16
ARXTM 120	110	60	65	24.75	24.75	26	34	n/a	n/a	n/a	12	7	56	61	4	n/a	5	2x16x20	16

NOTES:

1. DRAWING IS NOT TO SCALE. DIMENSIONS SUBJECT TO CHANGE WITHOUT NOTIFICATION.
2. UNITS SHOULD BE INSTALLED AT MINIMUM 24" FROM GROUND.
3. INLET SCREEN IS PROVIDED ON OUTDOOR UNITS.
4. ALL UNITS ARE PRE-PIPED, PRE-WIRED, AND FIRE TESTED PRIOR TO SHIPMENT.

Installation Code and Annual Inspections:

All installations and service of WEATHER-RITE™ products must be performed by a contractor qualified in the installation and service of products sold and supplied by Weather-Rite, LLC and conform to all requirements set forth in the WEATHER-RITE™ manuals and all applicable governmental authorities pertaining to the installation, service and operation of the equipment. To help facilitate optimum performance and safety, Weather-Rite, LLC recommends that a qualified contractor annually inspect your WEATHER-RITE™ products and perform service where necessary, using only replacement parts sold and supplied Weather-Rite, LLC.

This document is intended to assist licensed professionals in the exercise of their professional judgement.