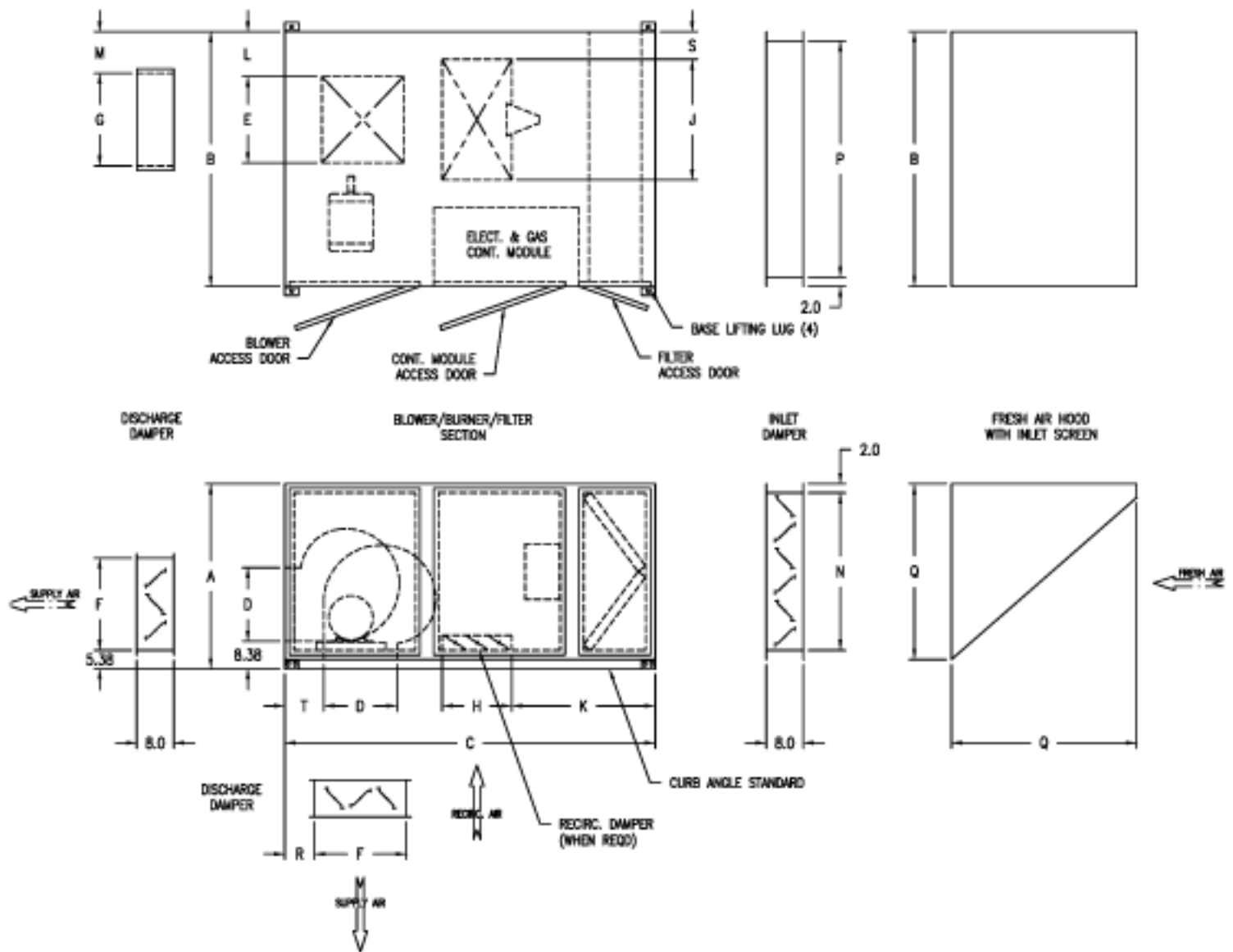


HORIZONTAL UNITS



DIMENSIONS																				
MODEL	A	B	C	D	E	F	G	H	J	K	L	M	N	P	Q	R	S	T	FILTERS	QTY
ARXT, ARXTR 112	42	50	70	13.44	15.62	19.5	26	15	26	27	9.25	4	36	46	40	5	4.5	6	2x20x25	4
ARXTM 112	42	50	80	13.44	15.62	19.5	26	n/a	n/a	n/a	9.25	4	36	46	40	5	n/a	6	2x20x25	4
ARXT, ARXTR 115	42	55	80	15.88	18.62	19.5	26	15	26	31	9.5	5.5	36	51	40	5	6	8	2x20x25	4
ARXTM 115	42	55	90	15.88	18.62	19.5	26	n/a	n/a	n/a	9.5	5.5	36	51	40	5	n/a	8	2x20x25	4
ARXT, ARXTR 118	42	55	90	18.88	21.88	19.5	26	20	30	31	9.5	7.5	36	51	40	5	6	5	2x16x25	8
ARXTM 118	42	55	100	18.88	21.88	19.5	26	n/a	n/a	n/a	9.5	7.5	36	51	40	5	n/a	5	2x16x25	8
ARXT, ARXTR 120	62	65	100	24.75	24.75	26	34	24	40	33	12	7	56	61	60	5	5	5	2x16x20	16
ARXTM 120	62	65	110	24.75	24.75	26	34	n/a	n/a	n/a	12	7	56	61	60	5	n/a	5	2x16x20	16

NOTES:

1. DRAWING IS NOT TO SCALE. DIMENSIONS SUBJECT TO CHANGE WITHOUT NOTIFICATION.
2. HH AND HB ARRANGEMENTS ARE STANDARD. CONSULT FACTORY FOR OTHER ARRANGEMENTS.
3. UNITS SHOULD BE INSTALLED AT MINIMUM 24" FROM GROUND.
4. HB UNITS MAY CARRY OVER MOISTURE, DO NOT INSTALL OVER DAMAGE-ABLE MATERIALS.
5. ALL UNITS ARE PRE-PIPED, PRE-WIRED, AND FIRE TESTED PRIOR TO SHIPMENT.

Installation Code and Annual Inspections:

All installations and service of WEATHER-RITE™ products must be performed by a contractor qualified in the installation and service of products sold and supplied by Weather-Rite, LLC and conform to all requirements set forth in the WEATHER-RITE™ manuals and all applicable governmental authorities pertaining to the installation, service and operation of the equipment. To help facilitate optimum performance and safety, Weather-Rite, LLC recommends that a qualified contractor annually inspect your WEATHER-RITE™ products and perform service where necessary, using only replacement parts sold and supplied by Weather-Rite, LLC.

This document is intended to assist licensed professionals in the exercise of their professional judgement.