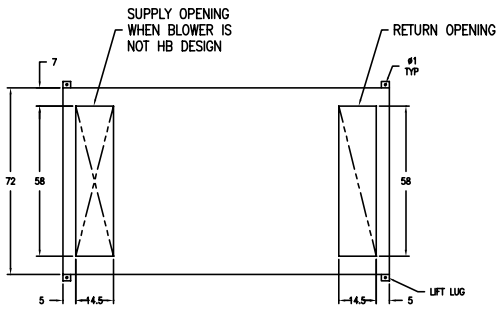
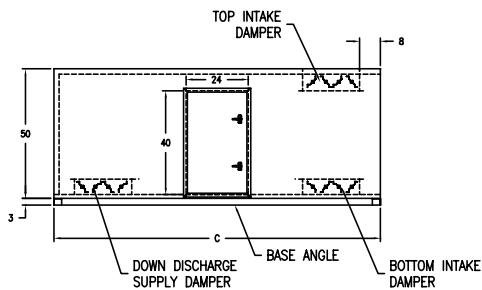


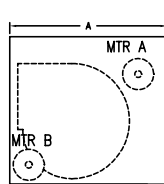
# CAR 75 STANDARD REFERENCE



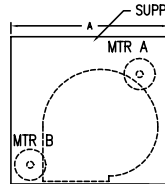
TYPICAL CABINET WITH SUPPLY & RETURN OPENINGS, DAMPER LOCATIONS AND DOOR DIMENSIONS



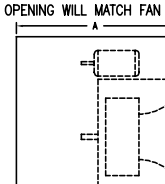
AVAILABLE LENGTHS	
C	54   78   102   126   150



FAN	HH	A
SINGLE	FC 12-15	30
SINGLE	FC 18	36
DOUBLE	FC 12 MA	30
DOUBLE	FC 12 MB	54
DOUBLE	FC 15 MA	30
DOUBLE	FC 15 MB	54
SINGLE	BC 12	30
SINGLE	BC 15	36
SINGLE	BC 18	42
DOUBLE	BC 12 MA	30
DOUBLE	BC 12 MB	36



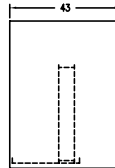
FAN	HB	A
SINGLE	FC 12-15	30
SINGLE	FC 18	36
DOUBLE	FC 12 MA	30
DOUBLE	FC 12 MB	54
DOUBLE	FC 15 MA	30
DOUBLE	FC 15 MB	54
SINGLE	BC 12	30
SINGLE	BC 15	36
SINGLE	BC 18	42
DOUBLE	BC 12 MA	30
DOUBLE	BC 12 MB	36



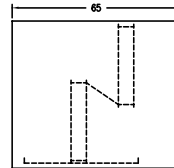
PLENUM FAN	A
SGL PLENUM 12-16	36
SGL PLENUM 18-20	36
SGL PLENUM 25	36
DBL PLENUM 12-16	36
DBL PLENUM 18-20	36

HB PLENUM FAN UNITS NEED DOWN DISCHARGE SUPPLY OPENING ADDITION

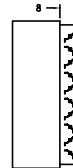
DETERMINE CABINET LENGTH BY ADDING COMPONENT LENGTHS TOGETHER, AND SELECT FROM STANDARD CABINET CHART BELOW



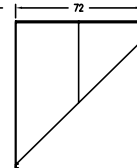
SINGLE COIL



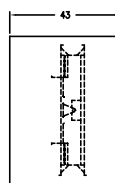
STAGGERED COIL



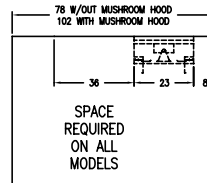
DAMPER



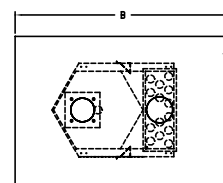
FRESH AIR HOOD



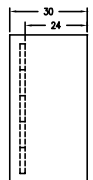
DIRECT FIRE BURNER HORIZONTAL DESIGN



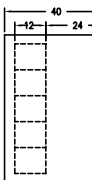
DIRECT FIRE BURNER VERTICAL DESIGN



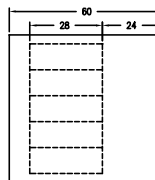
EXTENDED VESTIBULE AND DUAL FANS REQUIRED ON INDIRECT BURNERS



FLAT FILTERS

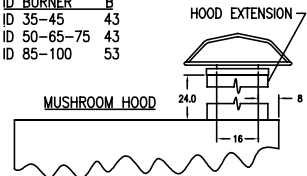


RIGID FILTERS



BAG FILTERS

ID BURNER	B
ID 35-45	43
ID 50-65-75	43
ID 85-100	53



Wenther-Rite Inc.