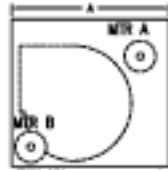
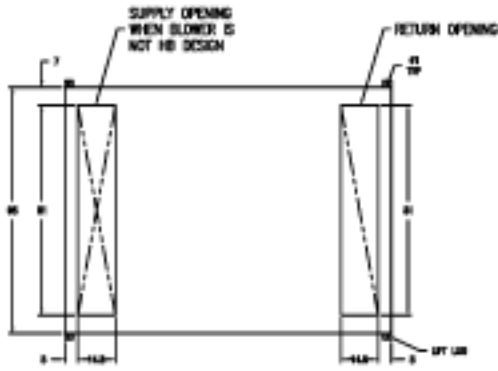
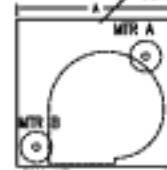


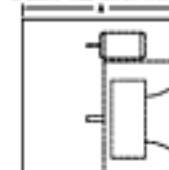
# 250 STANDARD REFERENCE



| CAN. IRI        | A  |
|-----------------|----|
| SINGLE FC 20    | 42 |
| SINGLE FC 24    | 50 |
| SINGLE FC 30    | 60 |
| DOUBLE FC 18 MA | 36 |
| DOUBLE FC 18 MB | 60 |
| DOUBLE FC 20 MA | 42 |
| DOUBLE FC 20 MB | 66 |
| SINGLE BC 30-33 | 65 |
| DOUBLE BC 18 MA | 42 |
| DOUBLE BC 18 MB | 66 |



| CAN. IRI        | A  |
|-----------------|----|
| SINGLE FC 20    | 42 |
| SINGLE FC 24    | 50 |
| SINGLE FC 30    | 60 |
| DOUBLE FC 18 MA | 36 |
| DOUBLE FC 18 MB | 60 |
| DOUBLE FC 20 MA | 42 |
| DOUBLE FC 20 MB | 66 |
| SINGLE BC 30-33 | 65 |
| DOUBLE BC 18 MA | 42 |
| DOUBLE BC 18 MB | 66 |

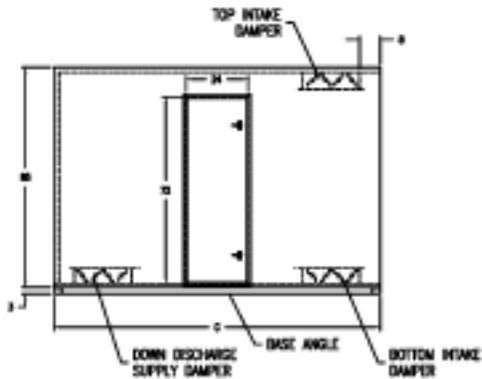


| PLENUM FAN        | A  |
|-------------------|----|
| SGL. PLENUM 32-35 | 48 |
| SGL. PLENUM 38    | 50 |
| DBL. PLENUM 25    | 42 |
| DBL. PLENUM 32-35 | 48 |

HS PLENUM FAN UNITS NEED DOWN DISCHARGE SUPPLY OPENING ADDITION

DETERMINE CABINET LENGTH BY ADDING COMPONENT LENGTHS TOGETHER, AND SELECT FROM STANDARD CABINET CHART BELOW

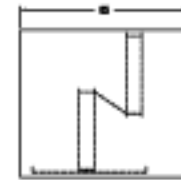
TYPICAL CABINET WITH SUPPLY & RETURN OPENINGS, DAMPER LOCATIONS AND DOOR DIMENSIONS



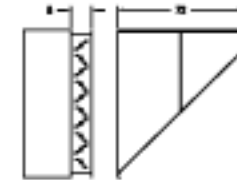
| AVAILABLE LENGTHS   |
|---------------------|
| C 54 78 102 126 150 |



SINGLE COIL

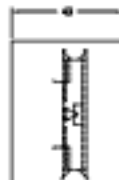


STAGGERED COIL

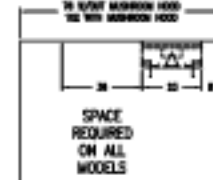


DAMPER

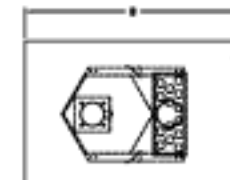
FRESH AIR HOOD



DIRECT FIRE BURNER HORIZONTAL DESIGN

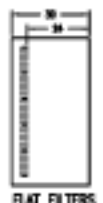


DIRECT FIRE BURNER VERTICAL DESIGN



EXTENDED VESTIBULE AND DUAL FANS REQUIRED ON INDIRECT BURNERS

| ID. BURNER  | B  |
|-------------|----|
| ID 50-65-75 | 43 |
| ID 85-100   | 53 |
| ID 125      | 65 |
| ID 150-160  | 72 |



FLAT FILTERS



RIGID FILTERS



BAG FILTERS



MUSHROOM HOOD

## Installation Code and Annual Inspections:

All installations and service of WEATHER-RITE™ products must be performed by a contractor qualified in the installation and service of products sold and supplied by Weather-Rite, LLC and conform to all requirements set forth in the WEATHER-RITE™ manuals and all applicable governmental authorities pertaining to the installation, service and operation of the equipment. To help facilitate optimum performance and safety, Weather-Rite, LLC recommends that a qualified contractor annually inspect your WEATHER-RITE™ products and perform service where necessary, using only replacement parts sold and supplied Weather-Rite, LLC.

This document is intended to assist licensed professionals in the exercise of their professional judgement.