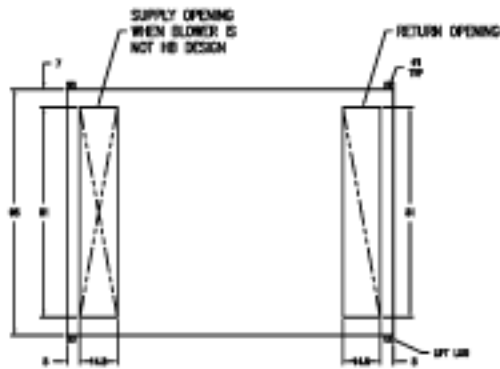
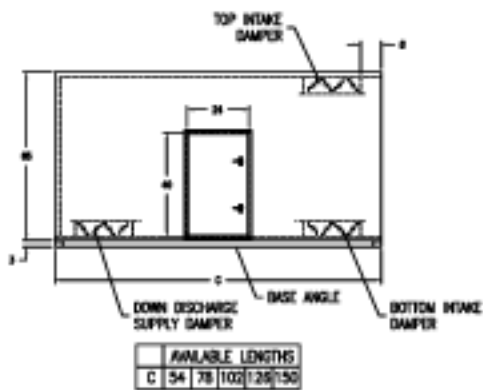


180 STANDARD REFERENCE



TYPICAL CABINET WITH SUPPLY & RETURN OPENINGS, DAMPER LOCATIONS AND DOOR DIMENSIONS



SUPPLY OPENING WILL MATCH FAN DISCHARGE (NOT OPENING SHOWN)

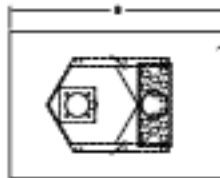
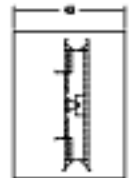
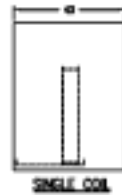
FAN/HEI	A
SINGLE FC 18	36
SINGLE FC 20	42
SINGLE FC 24	50
DOUBLE FC 15 MA	30
DOUBLE FC 15 MB	54
DOUBLE FC 18 MA	36
DOUBLE FC 18 MB	60
SINGLE BC 18-20	42
SINGLE BC 24	50
DOUBLE BC 15 MA	36
DOUBLE BC 15 MB	60
DOUBLE BC 18 MA	42
DOUBLE BC 18 MB	66

FAN/HEI	A
SINGLE FC 18	36
SINGLE FC 20	42
SINGLE FC 24	50
DOUBLE FC 15 MA	30
DOUBLE FC 15 MB	54
DOUBLE FC 18 MA	36
DOUBLE FC 18 MB	60
SINGLE BC 18-20	42
SINGLE BC 24	50
DOUBLE BC 15 MA	36
DOUBLE BC 15 MB	60
DOUBLE BC 18 MA	42
DOUBLE BC 18 MB	66

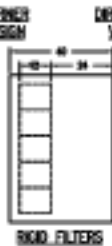
PLENUM FAN	A
SGL PLENUM 25	42
SGL PLENUM 32-35	48
DBL PLENUM 18	36
DBL PLENUM 18	36
DBL PLENUM 20	36

HIS PLENUM FAN UNITS NEED DOWN DISCHARGE SUPPLY OPENING ADJUSTION

DETERMINE CABINET LENGTH BY ADDING COMPONENT LENGTHS TOGETHER, AND SELECT FROM STANDARD CABINET CHART BELOW



Ø BURNER	B
Ø 50-65-75	43
Ø 85-100	53
Ø 125	65
Ø 150-160	72



Installation Code and Annual Inspections:

All installations and service of WEATHER-RITE™ products must be performed by a contractor qualified in the installation and service of products sold and supplied by Weather-Rite, LLC and conform to all requirements set forth in the WEATHER-RITE™ manuals and all applicable governmental authorities pertaining to the installation, service and operation of the equipment. To help facilitate optimum performance and safety, Weather-Rite, LLC recommends that a qualified contractor annually inspect your WEATHER-RITE™ products and perform service where necessary, using only replacement parts sold and supplied Weather-Rite, LLC.

This document is intended to assist licensed professionals in the exercise of their professional judgement.