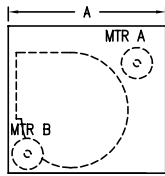
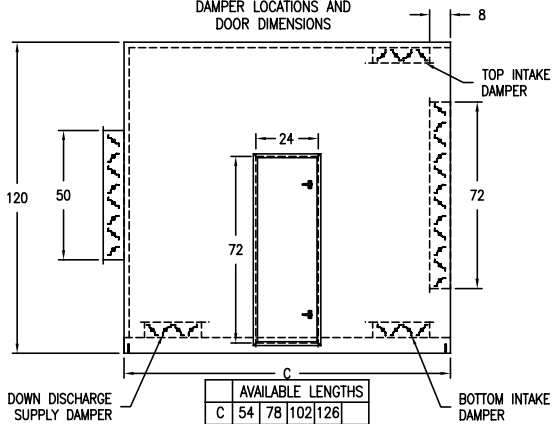
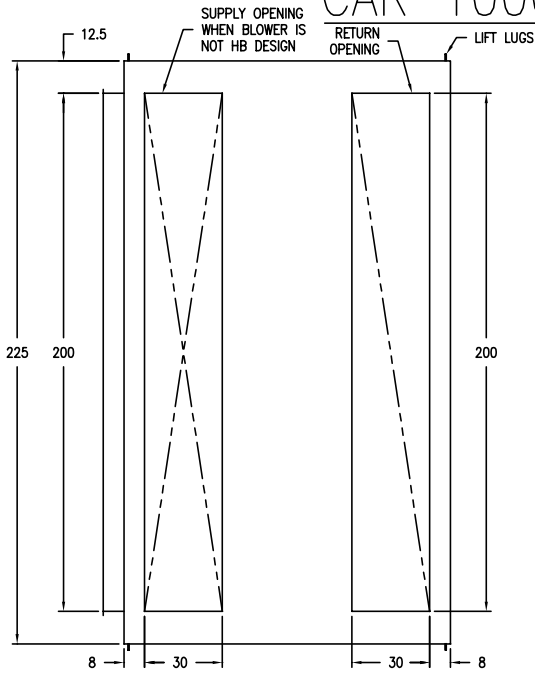
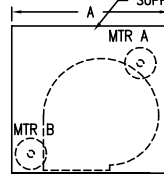


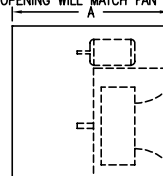
CAR 1000 STANDARD REFERENCE



FAN HH	A
DBL FC 33-36 MA	65
DBL FC 33-36 MB	101
DOUBLE FC 40 MA	80
DOUBLE FC 40 MB	116
SINGLE BC 44	85
SINGLE BC 49	96
SINGLE BC 54	108
DOUBLE BC 36 MA	72
DOUBLE BC 36 MB	108
DOUBLE BC 40 MA	80
DOUBLE BC 40 MB	116
DOUBLE BC 44 MA	85
DOUBLE BC 44 MB	121



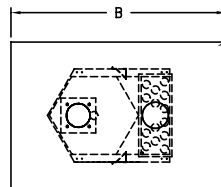
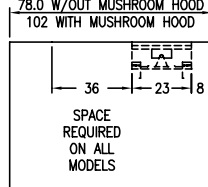
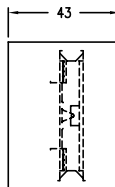
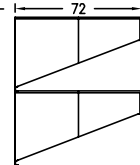
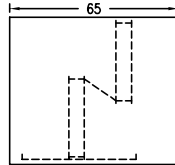
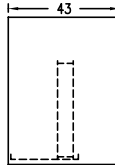
FAN HB	A
DBL FC 33-36 MA	65
DBL FC 33-36 MB	101
DOUBLE FC 40 MA	80
DOUBLE FC 40 MB	116
SINGLE BC 44	85
SINGLE BC 49	96
SINGLE BC 54	108
DOUBLE BC 36 MA	72
DOUBLE BC 36 MB	108
DOUBLE BC 40 MA	80
DOUBLE BC 40 MB	116
DOUBLE BC 44 MA	85
DOUBLE BC 44 MB	121



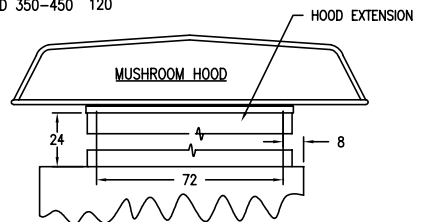
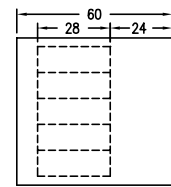
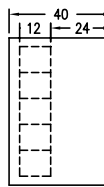
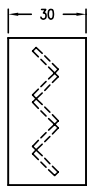
PLENUM FAN	A
SGL PLENUM 63	72
SGL PLENUM 71	78
DBL PLENUM 49	60
DBL PLENUM 55	65
DBL PLENUM 63	72

HB PLENUM FAN UNITS NEED DOWN DISCHARGE SUPPLY OPENING ADDITION

DETERMINE CABINET LENGTH BY ADDING COMPONENT LENGTHS TOGETHER, AND SELECT FROM STANDARD CABINET CHART BELOW



EXTENDED VESTIBULE AND DUAL FANS REQUIRED ON INDIRECT BURNERS



Weather-Rite, Inc.