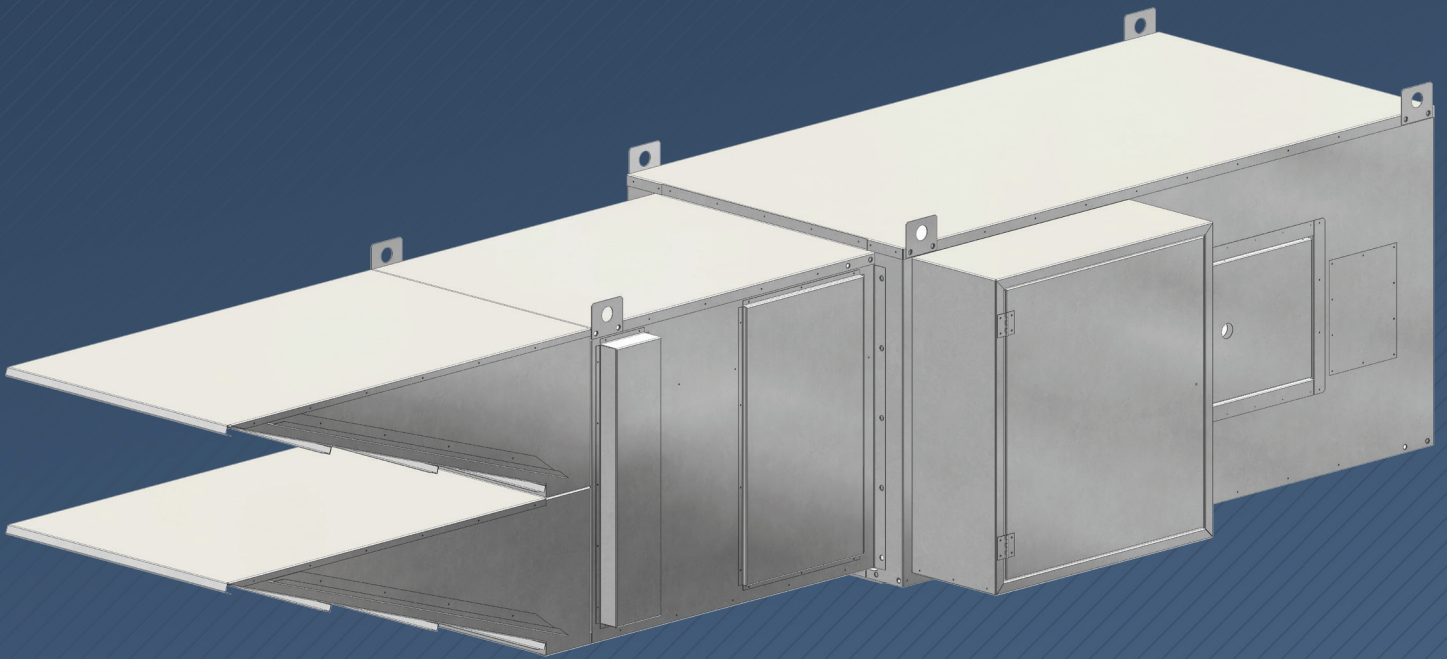


Weather-Rite^{LLC}

Direct-Fired Air Handler



XT-Series Dimension and Selection Guide

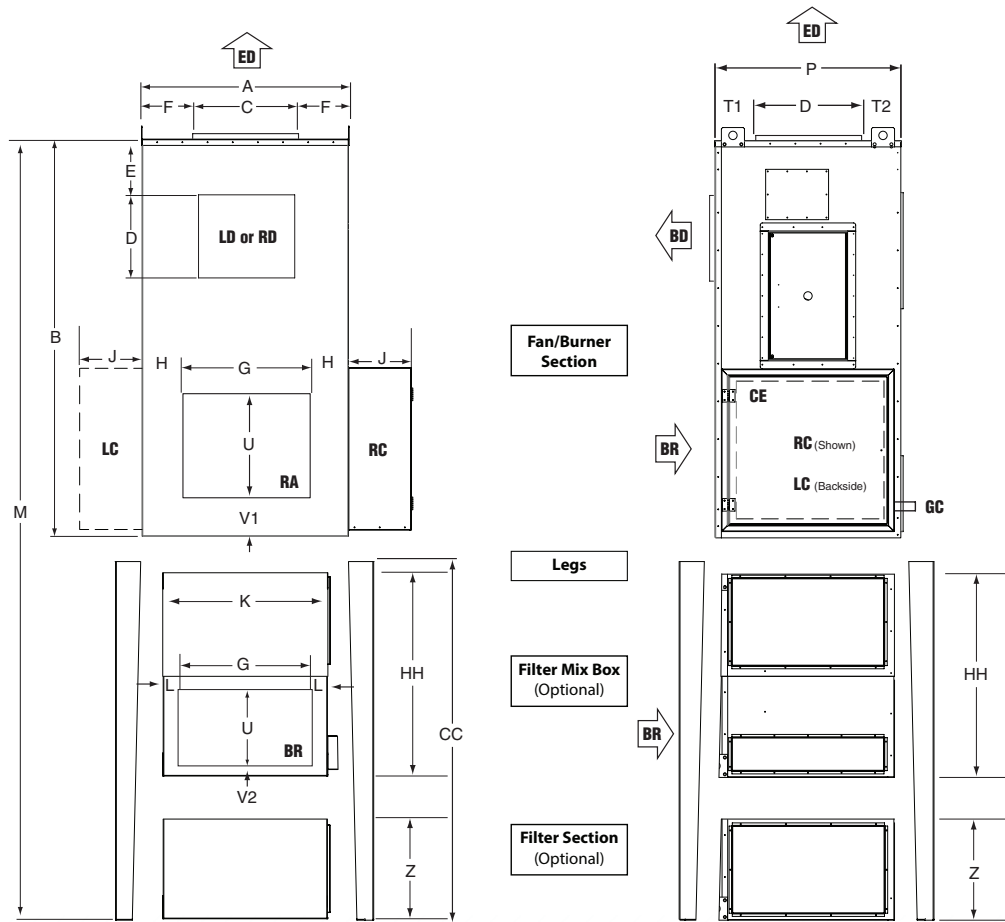
***1.800.589.3691
www.weather-rite.com***



Intertek

ANSI Z83.4/CSA 3.7 100% OUTSIDE AIR
(US & CANADA)
Z83.18 - RECIRCULATION (US)
ANSI Z83.25/CSA 3.19 PROCESS HEATER
(US & CANADA)

Upright Model



DIMENSIONS

Model		A	B	C	D	E	F	G	H	J	K	L	M1*	M2*	P	T1	T2	U	V1	V2	W1*	W2*	Y	Z
XT-112 1K-2K CFM	(in) (cm)	28.3 (71.8)	81.7 (207.5)	11.8 (29.9)	10.2 (25.9)	9.2 (23.3)	8.3 (21.0)	16.0 (40.6)	6.1 (15.5)	15.1 (38.4)	25.3 (64.2)	4.7 (12.0)	134.8 (342.4)	168.7 (428.5)	32.2 (81.8)	20.8 (52.8)	3.1 (7.9)	18.0 (28.4)	7.3 (18.5)	7.3 (18.5)	33.2 (84.3)	40.7 (103.4)	43.5 (110.5)	28 (71.1)
XT-112 2K-4K CFM	(in) (cm)	28.3 (71.8)	81.7 (207.5)	15.6 (39.6)	13.5 (34.2)	9.2 (23.3)	6.1 (15.5)	16.0 (40.6)	6.1 (15.5)	15.1 (38.4)	25.3 (64.2)	4.7 (12.0)	134.8 (342.4)	168.7 (428.5)	32.2 (81.8)	15.7 (39.8)	3.0 (7.6)	18.0 (28.4)	7.3 (18.5)	7.3 (18.5)	33.2 (84.3)	40.7 (103.4)	43.5 (110.5)	28 (71.1)
XT-115	(in) (cm)	43.3 (109.9)	106.6 (270.7)	23.1 (58.7)	25.0 (63.5)	11.2 (28.4)	10 (25.4)	32 (81.3)	5.6 (14.2)	15.0 (38.1)	39.0 (99.0)	4.15 (10.5)	159.6 (405.4)	193.6 (491.7)	40.2 (102.1)	11.9 (30.2)	3.4 (8.6)	23.3 (59.2)	8.1 (20.6)	3.4 (8.6)	41.3 (104.9)	65.4 (166.1)	45.8 (116.3)	26.0 (66.0)
XT-118	(in) (cm)	49.1 (124.7)	97.8 (248.4)	27.6 (70.1)	27.8 (70.6)	12.8 (32.5)	10.8 (27.4)	40.5 (102.8)	4.3 (10.9)	15.0 (38.1)	43.1 (109.4)	2.8 (7.1)	150.8 (383.0)	184.8 (469.4)	44.3 (112.5)	13.7 (34.7)	3.2 (8.1)	20.0 (51.0)	8.2 (20.8)	3.4 (8.6)	45.7 (116.1)	65.0 (165.1)	43.25 (109.9)	25.0 (63.5)
XT-125	(in) (cm)	55.9 (141.9)	116.2 (295.1)	31.6 (80.2)	31.3 (79.5)	13.6 (34.5)	12.1 (30.7)	44.3 (112.5)	5.8 (14.7)	19.8 (50.3)	49.9 (126.7)	4.25 (10.7)	188.2 (478.0)	234.2 (594.8)	56.2 (142.7)	8.4 (21.3)	2.9 (7.3)	35.2 (89.4)	6.6 (16.8)	3.4 (8.6)	57.4 (145.8)	79.0 (200.7)	55.0 (139.7)	31.0 (78.7)
XT-130	(in) (cm)	80.1 (203.4)	153.3 (389.3)	36.7 (93.2)	36.7 (93.2)	17.1 (43.4)	21.5 (54.6)	69.1 (175.5)	5.5 (14.0)	20.2 (51.3)	73.1 (185.6)	4.25 (10.7)	225.3 (572.3)	271.3 (689.1)	58.2 (147.8)	17.5 (44.4)	4.0 (10.1)	35.2 (89.4)	8.9 (22.6)	4.0 (10.2)	58.5 (148.6)	78.9 (200.4)	65.9 (167.4)	25.0 (63.5)

IMPORTANT NOTES:

*(see corresponding dimensions below)

M1 - No Filter Mixbox

M2 - with Filter Mixbox

W1 - with Moisture Limiter or No Filters

W2 - with Filters

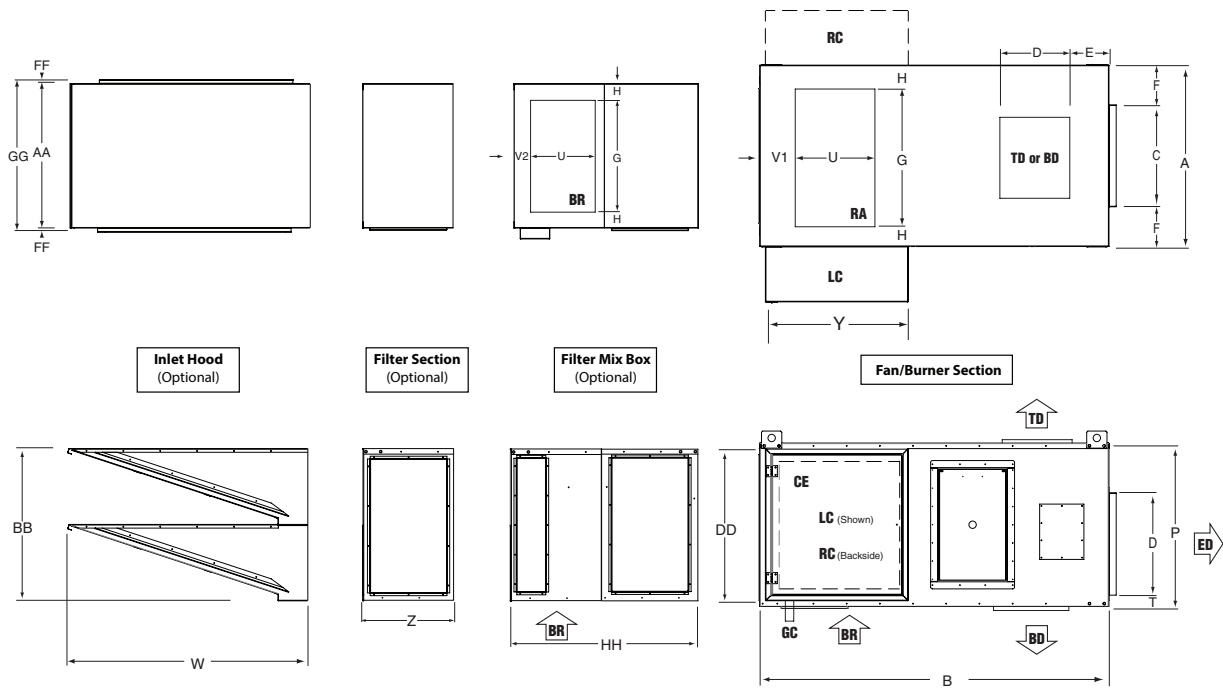
CC1 - No Filter Mixbox

CC2 - with Filter Mixbox

DIMENSIONS

Model		AA	BB	CC1*	CC2*	DD	FF	GG	HH	Horizontal Leg Height
XT-112	(in) (cm)	25.3 (64.3)	29.2 (74.1)	53.0 (134.6)	87.0 (220.9)	29.0 (73.6)	1.1 (2.7)	27.8 (70.6)	48.0 (121.9)	46.0 (116.8)
XT-115	(in) (cm)	39.1 (99.3)	37.2 (94.5)	53.0 (134.6)	87.0 (220.9)	40.1 (101.9)	1.1 (2.7)	41.6 (105.7)	50.4 (128.1)	46.0 (116.8)
XT-118	(in) (cm)	43.5 (110.5)	44.2 (112.3)	53.0 (134.4)	87.0 (220.9)	41.3 (104.9)	1.1 (2.7)	45.8 (116.3)	46.9 (119.1)	46.0 (116.8)
XT-125	(in) (cm)	55.8 (141.7)	56.2 (142.7)	72.0 (182.9)	118.0 (299.7)	56.2 (142.8)	1.1 (2.7)	52.4 (133.1)	67.6 (171.7)	46.0 (116.8)
XT-130	(in) (cm)	72.5 (184.2)	58.2 (147.8)	72.0 (182.9)	118.0 (299.7)	43.0 (109.2)	1.1 (2.7)	74.8 (190.0)	63.6 (161.5)	46.0 (116.8)

Horizontal Model



ESTIMATED SHIPPING WEIGHTS

Model	XT-112		XT-115		XT-118		XT-125		XT-130	
	lbs	kg	lbs	kg	lbs	kg	lbs	kg	lbs	kg
Air Handler*	589	267	994	451	1290	585	1946	883	2877	1305
Filter Section**	118	54	210	95	282	128	407	185	439	199
Filtered Mix Box**	301	137	443	201	539	245	800	363	1156	524
Inlet Hoods	145	66	276	125	346	157	499	226	539	244
Upright Legs***	75	34	99	45	137	62	176	80	214	97
Horizontal Legs***	102	46	102	46	102	46	102	46	102	46
Moisture Limiters****	N/A	N/A	120	54	120	54	210	95	260	118
Skid	147	67	249	113	324	146	486	220	719	326

LEGEND

BD = Bottom Discharge	OA = Outside Air
CE = Control Enclosure	RA = Return Air (Optional)
GC = Gas Connection	TD = Top Discharge
ED = End Discharge	RC = Right Hand Controls
	LC = Left Hand Controls

IMPORTANT NOTES:

- Shipping weights apply to both horizontal and upright models.
- All dimensions and weights are subject to change without notice.
- Control enclosure may be located on either side of air handler. Consult factory submittals for additional details.
- Return Air (RA) is only for Fixed Recirculation (FR) and Air Management (AM) styles.

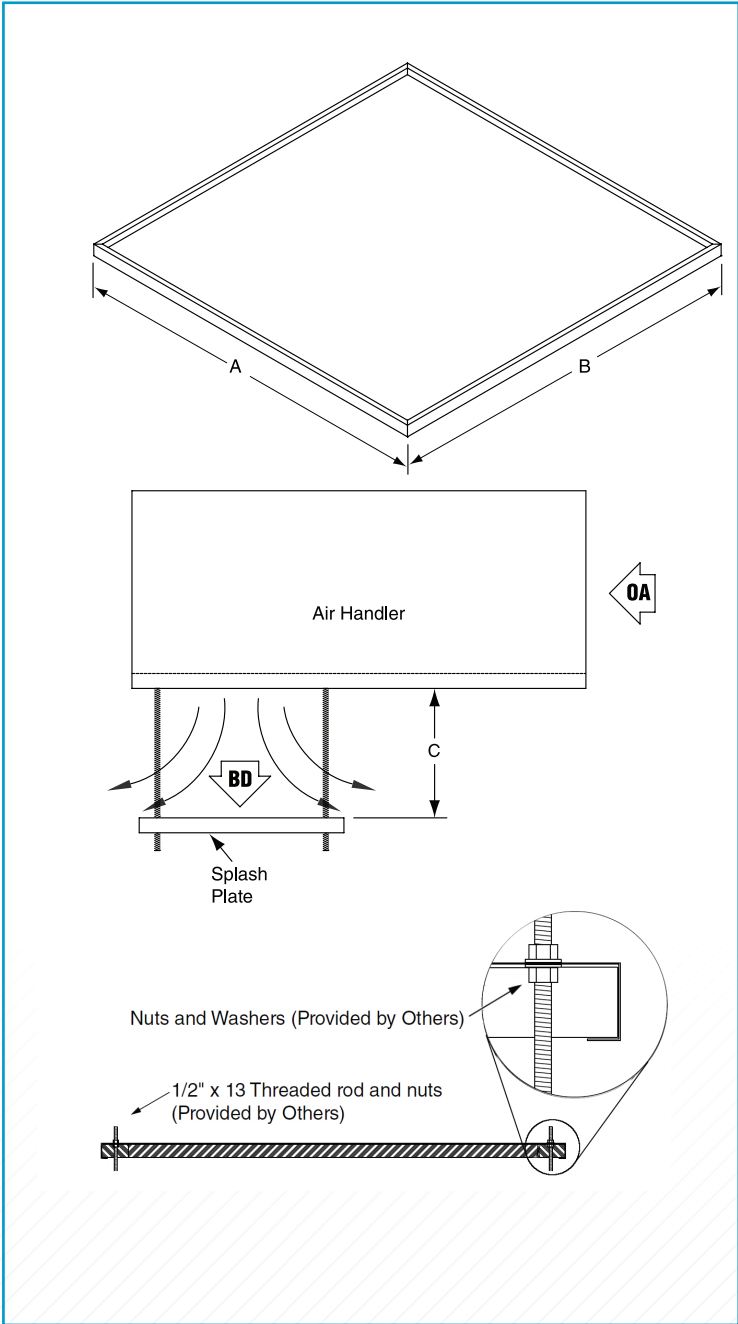
*Includes Casing, Motor, Control Panel and Manifold

**Includes weight of Filters

***Total Quantity of 4 legs

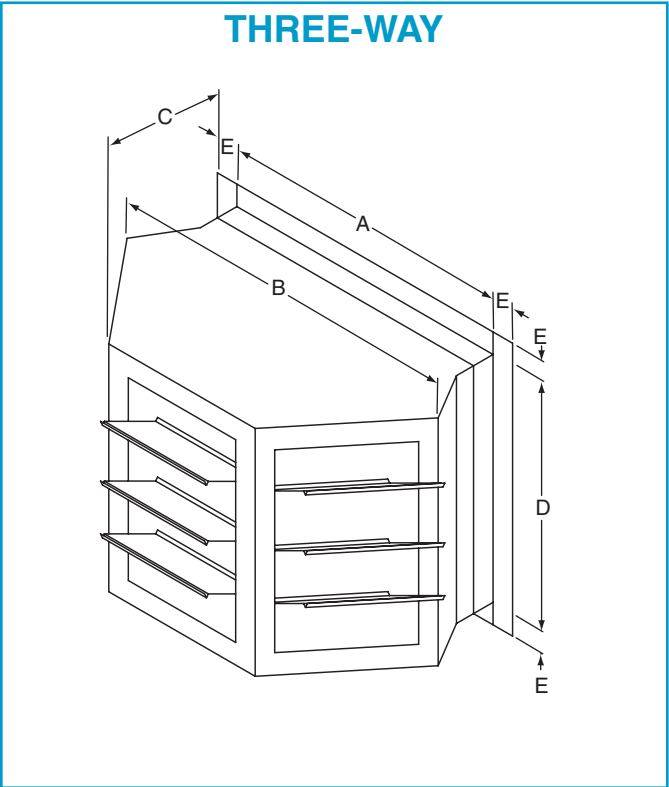
****Mounted to Intake Hood

Splash Plates



DIMENSIONS					
Model		A	B	C (min)	C (max)
XT-112 1K-2K CFM	(in) (cm)	25.5 (64.8)	27.6 (70.1)	15.0 (38.1)	20.0 (50.8)
XT-112 2K-4K CFM	(in) (cm)	25.5 (64.8)	27.6 (70.1)	15.0 (38.1)	20.0 (50.8)
XT-115	(in) (cm)	37.0 (94.0)	35.1 (89.2)	18.0 (47.5)	27.0 (68.6)
XT-118	(in) (cm)	39.8 (101.1)	39.6 (100.6)	18.0 (47.5)	27.0 (68.6)
XT-125	(in) (cm)	43.3 (110.0)	43.6 (110.7)	25.0 (63.5)	38.0 (96.5)
XT-130	(in) (cm)	48.7 (123.7)	48.7 (123.7)	30.0 (76.2)	45.0 (114.3)

Discharge Heads

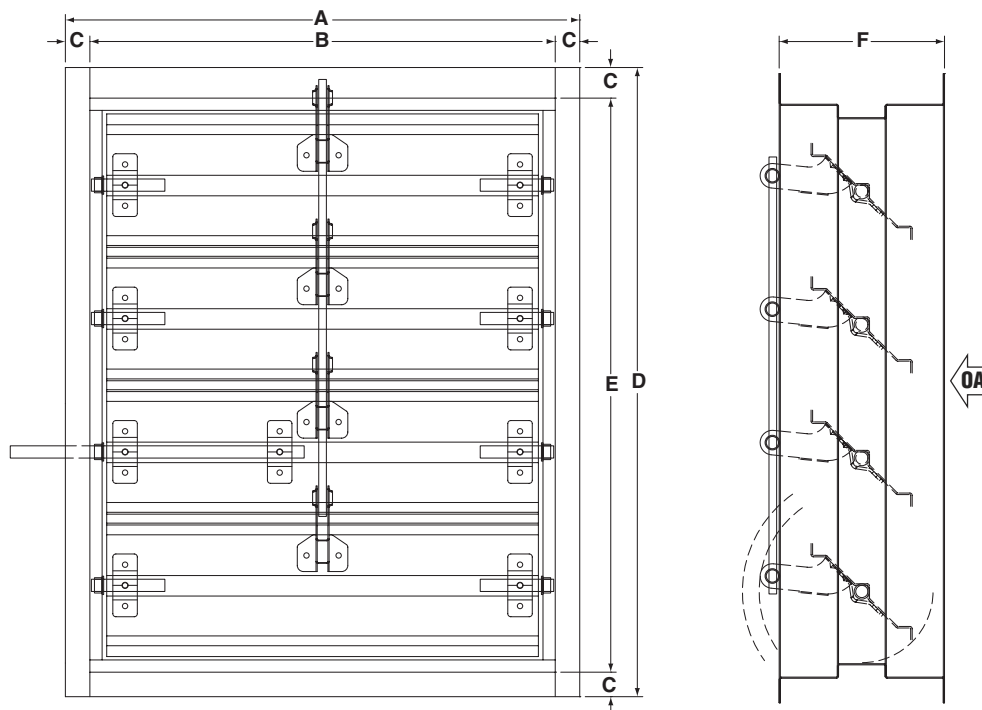


DIMENSIONS							WEIGHT	
Model		A	B	C	D	E	lbs	kg
XT-112	(in) (cm)	16.0 (40.6)	35.5 (90.2)	22.8 (57.9)	13.6 (34.5)	2.0 (5.1)	40	18
XT-115	(in) (cm)	23.4 (59.4)	55.7 (141.5)	35.2 (89.4)	25.3 (64.3)	2.0 (5.1)	50	23
XT-118	(in) (cm)	27.8 (70.6)	55.7 (141.5)	35.8 (90.9)	27.8 (70.6)	2.0 (5.1)	84	38
XT-125	(in) (cm)	34.5 (87.6)	77.3 (196.3)	47.7 (121.2)	32.4 (82.3)	2.0 (5.1)	120	54
XT-130	(in) (cm)	37.4 (95.0)	86.8 (220.5)	51.8 (131.6)	37.4 (95.0)	2.0 (5.1)	160	73

IMPORTANT NOTES:

- Discharge head must be field supported by others.
- Discharge head has manually adjustable horizontal blades.

Discharge Dampers



DIMENSIONS								WEIGHT	
Model		A	B	C	D	E	F	lbs	kg
XT-112	(in) (cm)	18.6 (47.2)	15.6 (39.6)	1.5 (3.8)	16.5 (41.9)	13.5 (34.2)	8.0 (20.3)	25	11
XT-115	(in) (cm)	28.0 (71.1)	25.0 (63.5)	1.5 (3.8)	26.1 (66.2)	23.1 (58.6)	8.0 (20.3)	51	23
XT-118	(in) (cm)	30.8 (78.2)	27.8 (70.6)	1.5 (3.8)	30.6 (77.7)	27.6 (70.1)	8.0 (20.3)	65	29
XT-125	(in) (cm)	34.3 (87.1)	31.3 (79.5)	1.5 (3.8)	34.6 (87.8)	31.6 (80.2)	8.0 (20.3)	83	38
XT-130	(in) (cm)	39.8 (101.0)	36.8 (93.4)	1.5 (3.8)	39.8 (101.0)	36.8 (93.4)	8.0 (20.3)	111	50

IMPORTANT NOTES:

- Discharge dampers do not mount directly to air handler; they mount downstream of air handler in duct work.

Filters

For Filter Sections

Permanent Aluminum Mesh Pleated / Polyester*			
Model		Size	Quantity
XT-112	(in) (cm)	25 x 25 x 2 (63.5 x 63.5 x 5.1)	2
XT-115	(in) (cm)	20 x 20 x 2 (50.8 x 50.8 x 5.1)	6
XT-118	(in) (cm)	24 x 20 + 20 x 20 [5 each] (60.9 x 50.8 x 5.1 + 50.8 x 50.8 x 5.1)	10
XT-125	(in) (cm)	25 x 25 x 2 (63.5 x 63.5 x 5.1)	12
XT-130	(in) (cm)	24 x 20 x 2 (60.9 x 50.8 x 5.1)	24

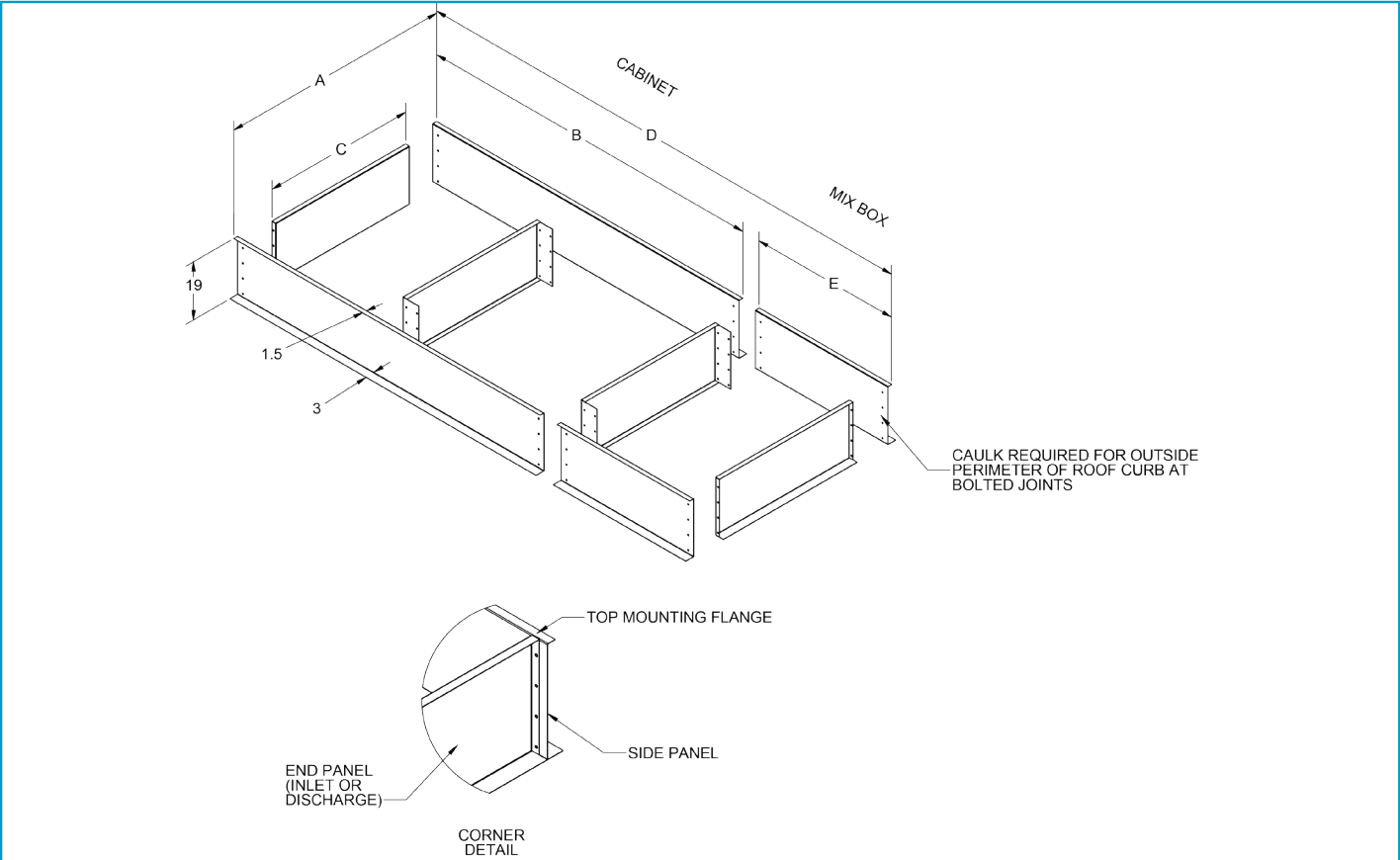
For Inlet Hoods

Poly Panel			
Model		Size	Quantity
XT-112	(in) (cm)	25 x 25 x 1 (63.5 x 63.5 x 2.5)	2
XT-115	(in) (cm)	20 x 20 x 1 (50.8 x 50.8 x 2.5)	6
XT-118	(in) (cm)	24 x 20 x 1 + 20 x 20 x 1 [5 each] (60.9 x 50.8 x 2.5 + 50.8 x 50.8 x 2.5)	10
XT-125	(in) (cm)	18 x 24 x 1 (45.7 x 60.9 x 2.5)	18
XT-130	(in) (cm)	25 x 75 x 1 (63.5 x 190.5 x 2.5)	6

IMPORTANT NOTES:

*Filter Sections, Filtered Mix Boxes use the same quantity and size.

Roof Curbs



DIMENSIONS						WEIGHT*		WEIGHT**		
Model		A	B	C	D	E	lbs	kg	lbs	kg
XT-112	(in) (cm)	24.3 (61.7)	80.2 (203.7)	21.3 (58.7)	128.1 (325.5)	48.9 (121.8)	96	43	140	63
XT-115	(in) (cm)	39.3 (99.8)	105.1 (267.0)	36.3 (96.8)	155.5 (395.1)	51.4 (128.1)	133	60	179	81
XT-118	(in) (cm)	45.1 (114.6)	96.3 (244.6)	42.1 (111.6)	143.2 (363.8)	47.9 (119.2)	130	59	173	78
XT-125	(in) (cm)	51.9 (131.8)	114.7 (291.3)	48.9 (128.8)	182.7 (464.1)	68.0 (172.7)	153	69	216	97
XT-130	(in) (cm)	76.1 (193.3)	151.8 (385.6)	73.1 (190.3)	215.4 (547.1)	64.6 (161.5)	210	95	268	121

IMPORTANT NOTES:

- *Blower and Burner Section
- **Blower, Burner and Filter Mixbox
- Curb is shipped unassembled.
- A & B are outside dimensions for the top of the curb.
- Curb material is 14 gauge galvanized steel.
- Nuts and bolts (3/8" x 1") are furnished.
- Caulk all joints before assembling. (Caulk provided by others).
- Dimensions D & E only applicable when Filtered Mixbox option is utilized.

XT-Series Selection Guide

Airflow CFM (m³/h)	Model	Motor HP at 1" ESP	dBA at Noted External Static Pressure (in wc)**			Heat Output at Maximum Temperature Rise (Btu/h) X 1000		Minimum Inlet Gas Pressure in wc (mbar)***	Manifold Size in NPT (mm)
			0	0.50	1.00	NG	LPG		
1,000 (1,700)	XT-112	1	62	66	70	97	86	7.1 (17.6)	0.75 (19)
2,000 (3,400)	XT-112	2	60	66	70	194	173	7.1 (17.6)	0.75 (19)
3,000 (5,100)	XT-112	2	60	65	70	292	259	7.1 (17.6)	0.75 (19)
4,000 (6,800)	XT-112	3	62	65	70	389	345	7.1 (17.6)	0.75 (19)
5,000 (8,500)	XT-115	3	58	63	68	594	486	7.1 (17.6)	1.0 (25)
6,000 (10,200)	XT-115	5	58	62	67	712	583	7.1 (17.6)	1.0 (25)
7,000 (11,900)	XT-115	5	59	62	66	831	680	7.1 (17.6)	1.0 (25)
8,000 (13,600)	XT-115	5	60	63	66	950	777	8.9 (22.1)	1.0 (25)
9,000 (15,300)	XT-115	7.5	61	64	67	1,069	874	11 (27.3)	1.0 (25)
10,000 (17,000)	XT-115	7.5	62	65	68	1,188	972	13.4 (33.3)	1.0 (25)
11,000 (18,700)	XT-118	7.5	64	66	68	1,306	1,069	7.7 (19.2)	1.25 (32)
12,000 (20,400)	XT-118	7.5	66	68	69	1,425	1,166	8.9 (22.1)	1.25 (32)
13,000 (22,100)	XT-118	10	67	69	CF	1,544	1,263	10.3 (25.6)	1.25 (32)
14,000 (23,800)	XT-118	10	69	CF	CF	1,663	1,361	11.7 (29.1)	1.25 (32)
16,000 (27,200)	XT-125	10	70	72	76	1,900	1,555	6.9 (17.17)	1.5 (38)
18,000 (30,600)	XT-125	15	70	74	77	2,138	1,749	8.3 (20.6)	1.5 (38)
20,000 (34,000)	XT-125	15	70	74	77	2,376	1,944	9.9 (24.6)	1.5 (38)
22,500 (38,200)	XT-125	20	71	74	77	2,673	2,187	12.2 (30.3)	1.5 (38)
25,000 (42,500)	XT-125	25	72	75	77	2,970	2,430	14.7 (36.6)	1.5 (38)
27,500 (46,700)	XT-130	25	71	73	75	3,267	2,673	7.7 (19.2)	2.0 (51)
30,000 (51,000)	XT-130	25	73	75	76	3,564	2,916	8.9 (22.1)	2.0 (51)
32,500 (55,200)	XT-130	30	75	76	77	3,861	3,159	10.2 (25.4)	2.0 (51)
35,000 (59,500)	XT-130	40	77	77	79	4,158	3,402	11.7 (29.1)	2.0 (51)
37,500 (63,700)	XT-130	40	78	79	79	4,455	3,645	13.4 (33.3)	2.0 (51)
40,000 (68,000)	XT-130	50	80	CF	CF	4,752	3,888	15.2 (37.8)	2.0 (51)

IMPORTANT NOTES:

All information provided in this table is based on the assumption that unit is installed at an altitude below 2000 feet (609.6 meters).

CF = Consult Factory

** dBA is measured at 10' (3 m) from unducted discharge.

*** Maximum Inlet Gas Pressure: Model XT-112 = 14 in wc (34.9 mbar)
XT-115 - XT-130 = 5 psi (344.7 mbar)

Thank You for Your Business!

Weather-Rite LLC

1100 Seven Mile Road NW
Comstock Park, MI 49321
Telephone: +1.612.338.1401
Fax: +1.616.784.0435
Toll Free: 1.800.589.3691
www.weather-rite.com

This product is not for residential use.

This document is intended to assist licensed professionals in the exercise of their professional judgment.

© 2017 Weather-Rite LLC

All rights reserved. No part of this work covered by the copyrights herein may be reproduced or copied in any form or by any means – graphic, electronic, or mechanical, including photocopying, recording, taping, or information storage and retrieval systems – without written permission of Weather-Rite LLC.