



**2000-Series**

# **Rapid**<sup>®</sup>

**Engineering** LLC

**Air Handlers**

**Direct-Fired Heating • Pressurization**



**Dimension and Selection Guide**

**1.800.536.3461**

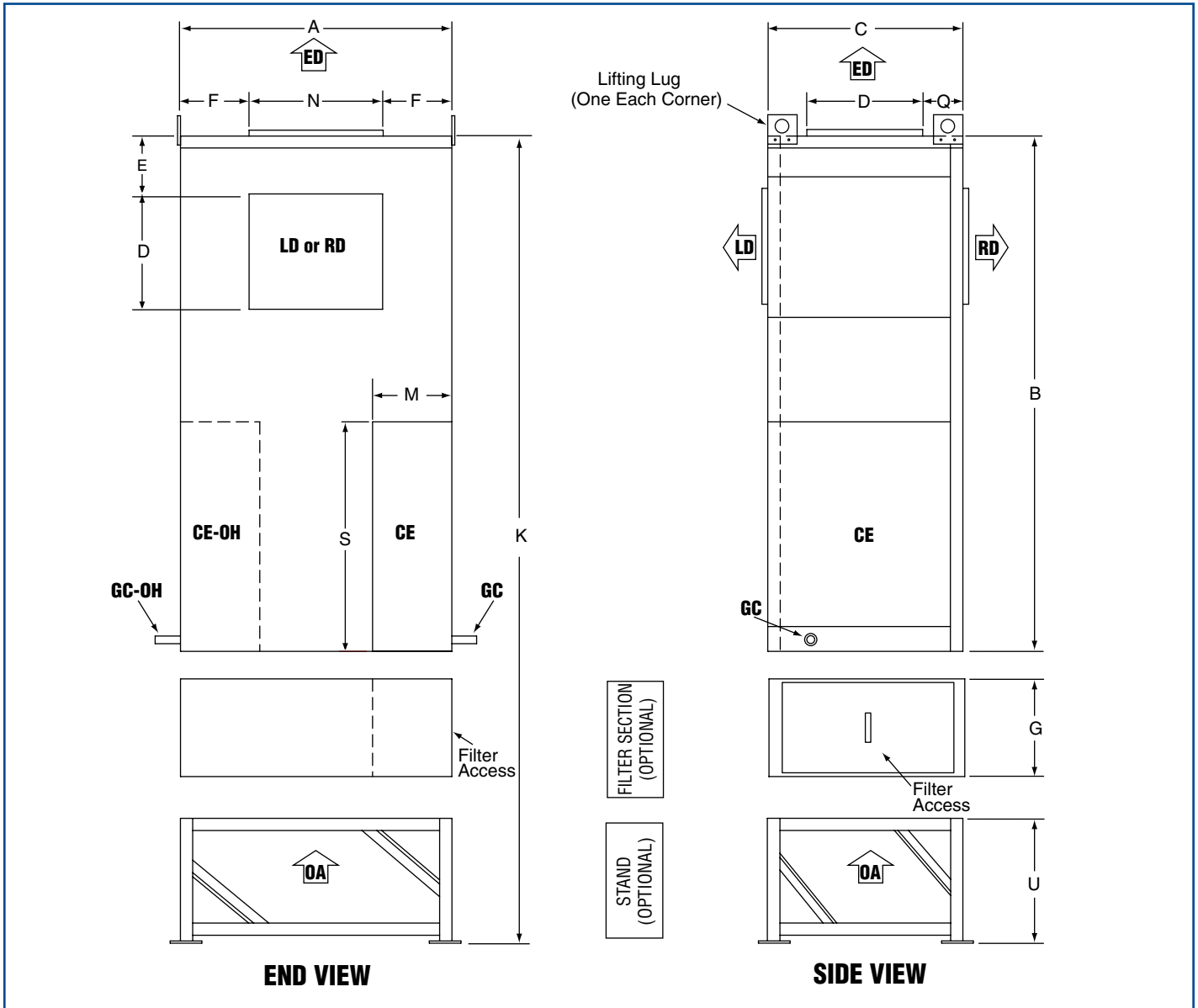
**[www.rapidengineering.com](http://www.rapidengineering.com)**



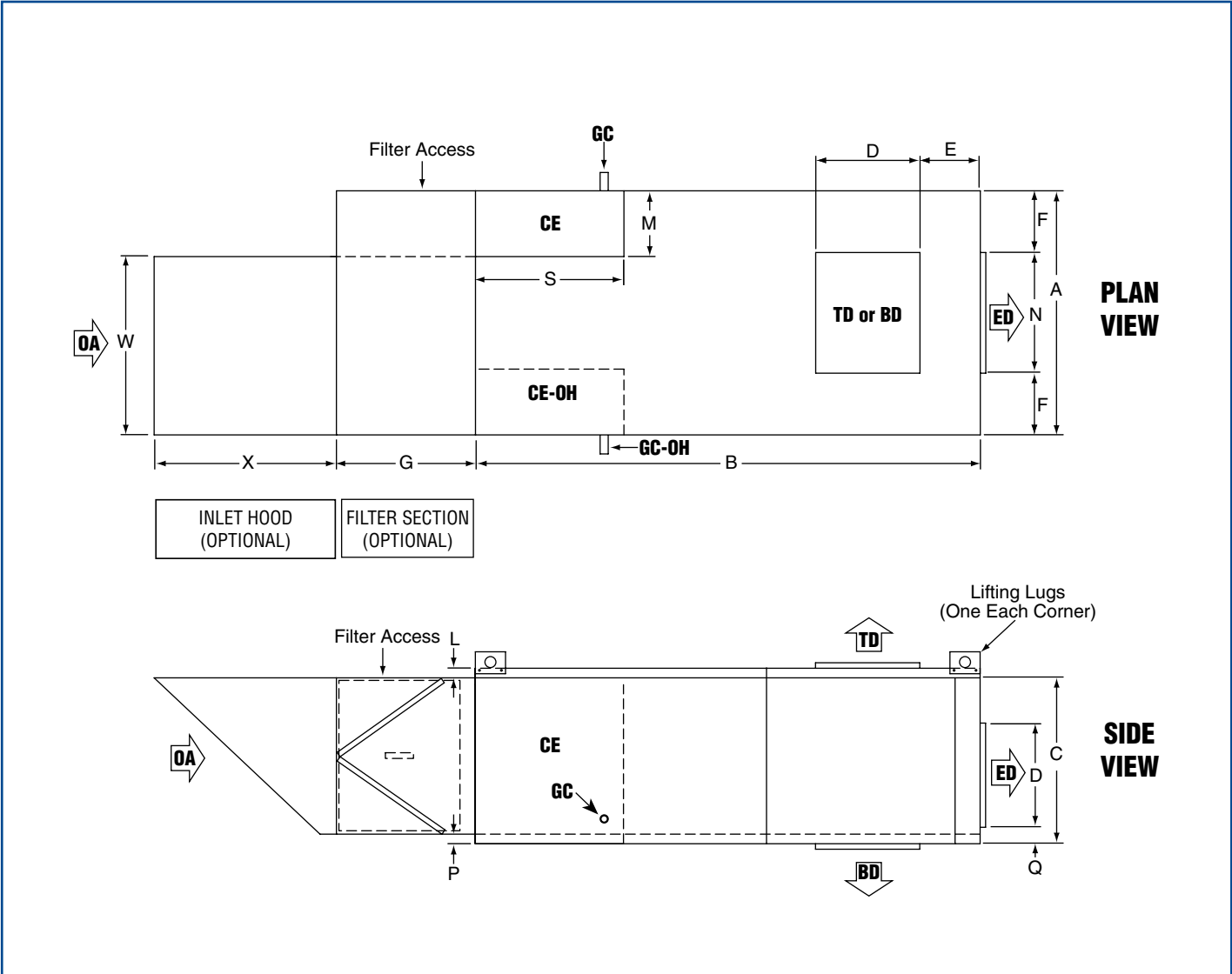
**Intertek**

CANADA: 100% OUTSIDE AIR ONLY

# 2005 Upright Model



DIMENSIONS																			
Model		CFM	A	B	C	D	E	F	G	K	L	M	N	P	Q	S	U	W	X
2005	(in)	1,000 - 3,000	32.3	60.3	28.3	10.4	6.8	11.5	27.0	117.3	1.5	8.0	9.3	1.8	3.1	35.2	30.0	25.0	38.4
	(cm)		82.1	153.2	71.9	26.4	17.3	29.2	68.6	297.9	3.8	20.3	23.6	4.6	7.9	89.4	76.2	63.5	97.5
	(in)	4,000	32.3	60.3	28.3	13.8	7.6	8.2	27.0	117.3	1.5	8.0	15.8	1.8	3.1	35.2	30.0	25.0	38.4
	(cm)		82.1	153.2	71.9	35.1	19.3	20.8	68.6	297.9	3.8	20.3	40.1	4.6	7.9	89.4	76.2	63.5	97.5



ESTIMATED SHIPPING WEIGHTS - MOTORS												
SIZE	HP kW	2 1.5	3 2.2	5 3.7	7.5 5.6	10 7.5	15 11.2	20 14.9	25 18.6	30 22.4	40 30.0	50 37.0
ODP	(lb) (kg)	58 26.3	69 31.3	77 34.9	120 54.4	164 74.4	231 104.8	269 122.0	339 153.8	398 180.5	608 275.8	629 285.3
TEFC	(lb) (kg)	90 40.8	135 61.2	133 60.3	200 90.7	219 99.3	316 143.3	395 179.2	510 231.3	545 247.2	710 322.1	795 360.6

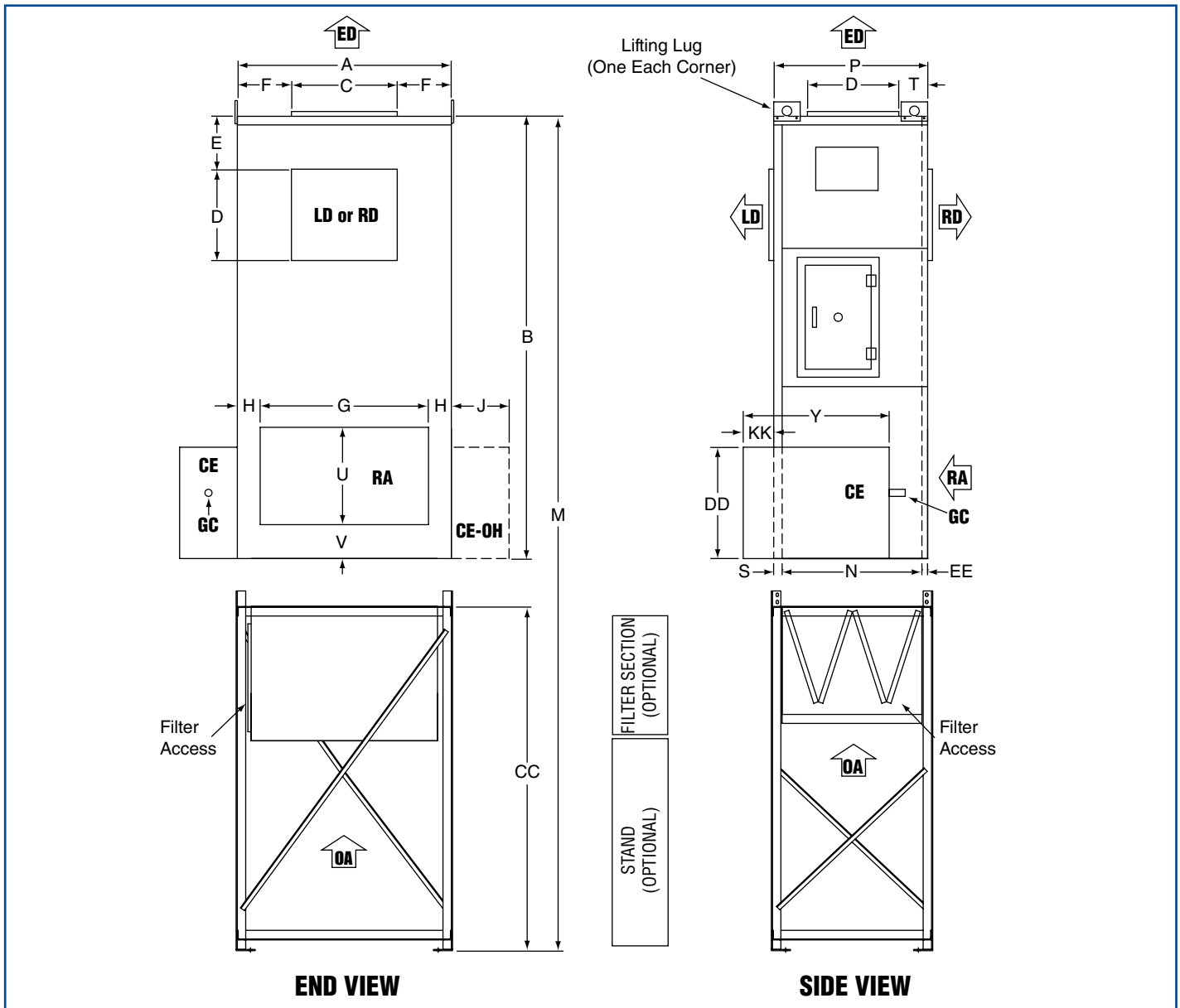
ESTIMATED SHIPPING WEIGHTS			
Model		Air Handler	Skid
2005	(lb) (kg)	450.0 204.1	50.0 22.7

### IMPORTANT NOTES:

- Shipping weights apply to both horizontal and upright models.
- All dimensions and weights are subject to change without notice.
- Outdoor air duct size varies. Consult factory.
- Control enclosure is located on left side of air handler when looking downstream into inlet end.

LEGEND	
<b>BD</b> = Bottom Discharge	<b>OA</b> = Outside Air
<b>CE</b> = Control Enclosure	<b>RD</b> = Right Discharge
<b>GC</b> = Gas Connection	<b>TD</b> = Top Discharge
<b>ED</b> = End Discharge	<b>OH</b> = Opposite Hand
<b>LD</b> = Left Discharge	

# 2010, 2010B, 2020 & 2030 Upright Model



DIMENSIONS																						
Model		A	B	C	D	E	F	G	H	J	M	N	P	Q	R	S	T	U	V	W	Y	Z
2010/ 2010B	(in)	44.2	92.3	22.0	19.0	10.5	11.1	37.9	3.2	14.0	*	29.6	32.7	48.1	35.1	1.6	3.0	10.0	3.4	56.4	37.2	34.0
	(cm)	112.3	234.4	55.9	48.3	26.7	28.2	96.3	8.1	35.6	*	75.2	83.1	122.2	89.2	4.1	7.6	25.4	8.6	143.2	94.5	86.3
2020	(in)	56.0	116.2	31.5	31.5	13.8	12.3	44.3	6.0	17.0	188.2	52.6	56.1	69.6	23.3	1.5	3.9	26.5	6.0	89.3	44.0	31.0
	(cm)	142.2	295.1	80.0	80.0	35.0	31.2	112.5	15.2	43.2	477.8	133.6	142.5	176.8	59.2	3.8	9.9	67.3	15.2	226.8	111.8	78.7
2030	(in)	68.0	116.2	36.8	36.8	17.0	15.6	56.3	6.0	17.0	188.2	56.6	60.1	69.6	23.3	1.5	3.9	30.5	6.0	86.9	44.0	31.0
	(cm)	172.7	295.1	93.5	93.5	43.2	39.6	143.0	15.2	43.2	477.8	143.8	152.7	176.8	59.2	3.8	9.9	77.5	15.2	220.7	111.8	78.7

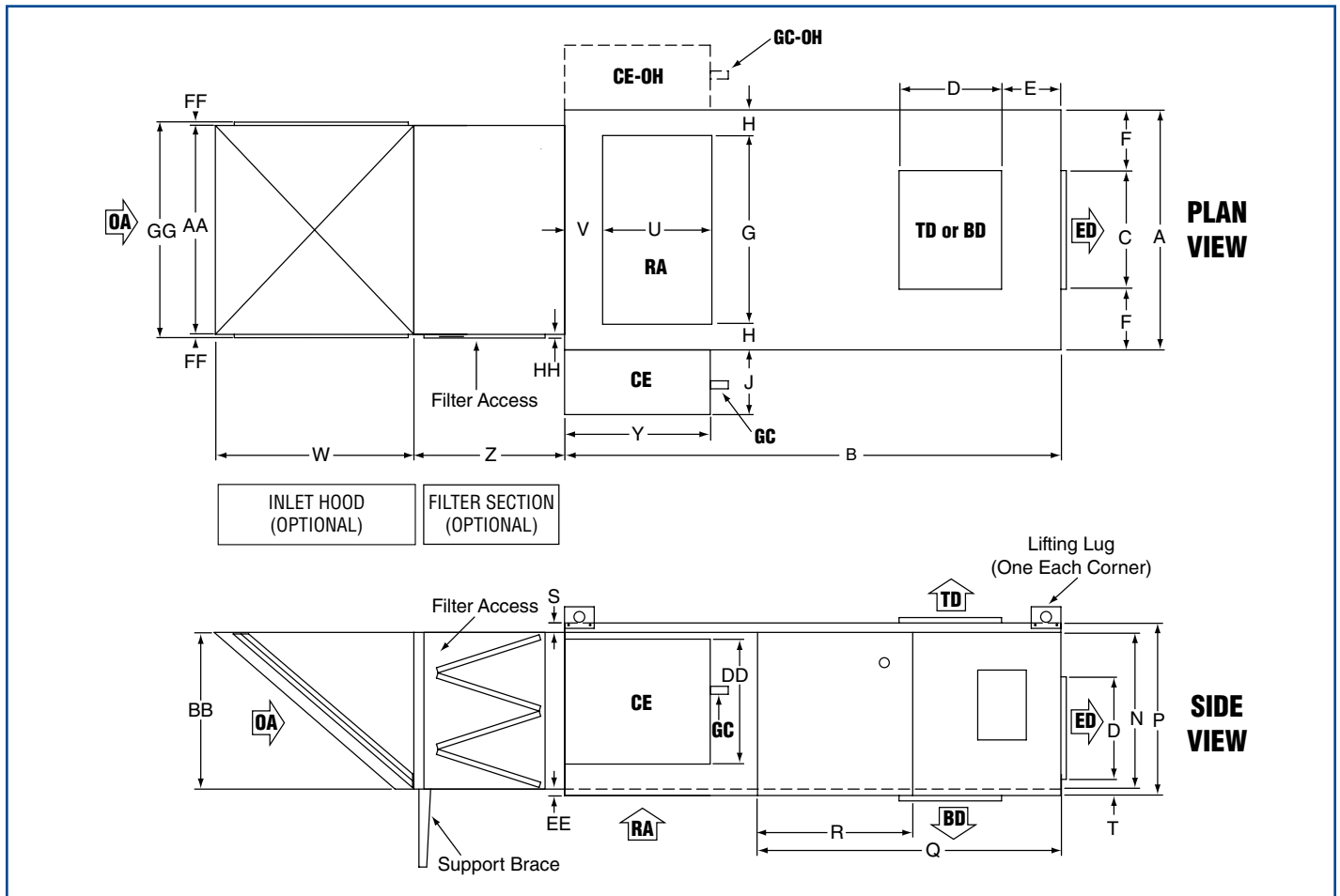
\*Refer to M\* in stand chart below.

DIMENSIONS										
Model		AA	BB	CC	DD	EE	FF	GG	HH	KK
2010/ 2010B	(in)	38.8	28.8	**	29.0	1.5	1.1	41.0	0.5	6.5
	(cm)	98.6	73.2	**	73.7	3.8	2.8	104.1	1.3	16.5
2020	(in)	49.7	52.8	72.0	33.0	2.0	1.1	52.0	0.4	N/A
	(cm)	126.2	134.1	182.9	83.8	5.1	2.8	132.1	1.0	N/A
2030	(in)	64.1	56.8	72.0	33.0	2.0	1.1	66.4	0.4	N/A
	(cm)	162.8	144.3	182.9	83.8	5.1	2.8	168.7	1.0	N/A

DIMENSIONS			
Model		M*	Height CC**
2010/ 2010B	(in)	145.3	53.0
	(cm)	369.1	134.6
2010/ 2010B	(in)	164.3	72.0
	(cm)	417.3	182.9

\*\*Refer to CC\*\* in stand chart to the right.

# 2010, 2010B, 2020 & 2030 Horizontal Model



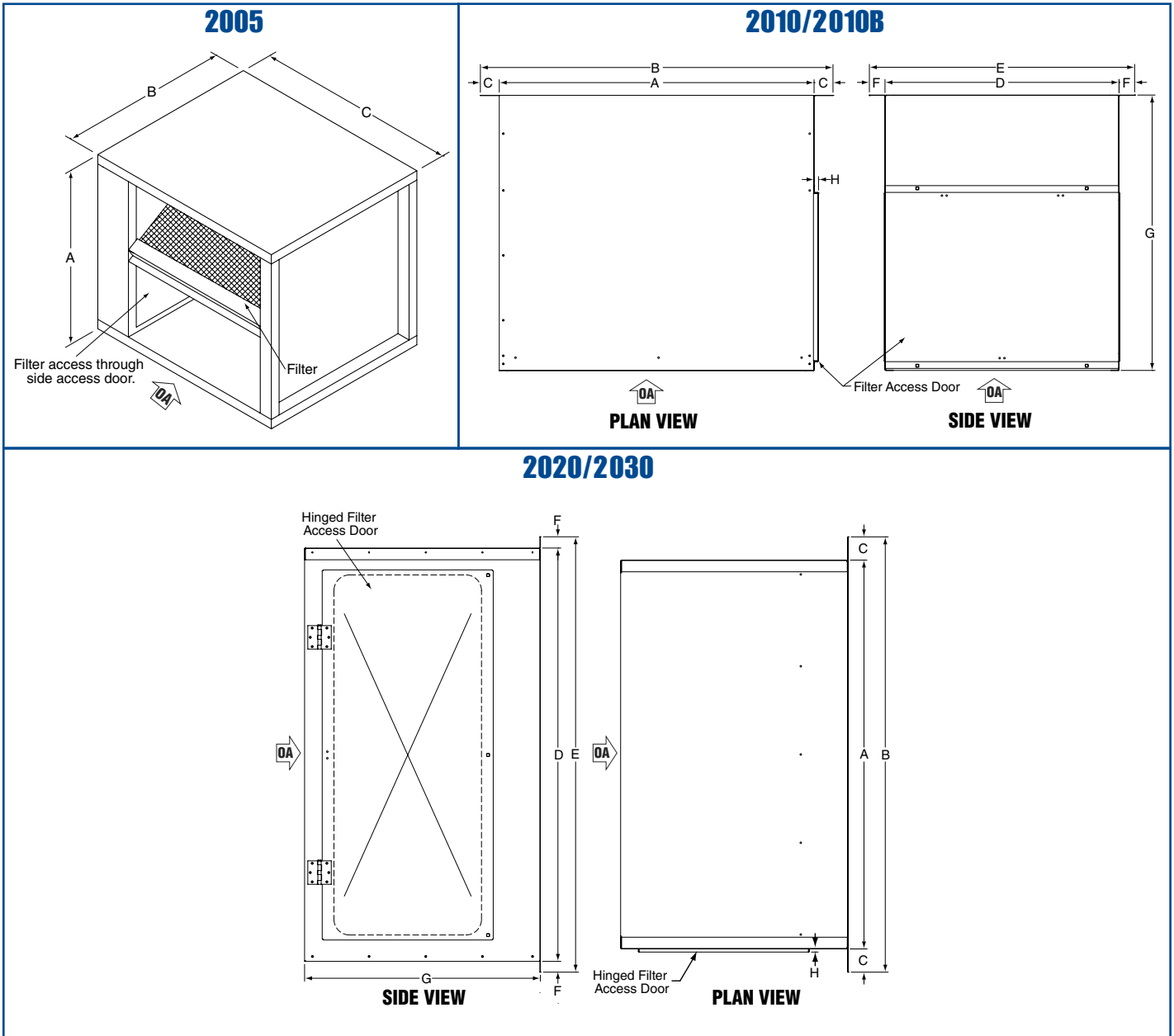
ESTIMATED SHIPPING WEIGHTS - MOTORS												
Size	HP kW	2 1.5	3 2.2	5 3.7	7.5 5.6	10 7.5	15 11.2	20 14.9	25 18.6	30 22.4	40 30.0	50 37.0
ODP	(lb) (kg)	58 26.3	69 31.3	77 34.9	120 54.4	164 74.4	231 104.8	269 122.0	339 153.8	398 180.5	608 275.8	629 285.3
TEFC	(lb) (kg)	90 40.8	135 61.2	133 60.3	200 90.7	219 99.3	316 143.3	395 179.2	510 231.3	545 247.2	710 322.1	795 360.6

ESTIMATED SHIPPING WEIGHTS			
Model		Air Handler	Skid
2010/ 2010B	(lb)	700.0	140.0
	(kg)	317.5	63.5
2020	(lb)	1,400.0	340.0
	(kg)	638.0	154.2
2030	(lb)	1,650.0	365.0
	(kg)	748.4	165.6

## IMPORTANT NOTES:

- Shipping weights apply to both horizontal and upright models.
- All dimensions and weights are subject to change without notice.
- Outdoor air duct size varies. Consult factory.
- Support brace required on horizontal units only if both filter section and inlet hood are required. Support brace provided by factory.
- Control enclosure is located on right side of air handler when looking downstream into inlet end.
- Return Air (RA) is only for Fixed Recirculation (FR) and Air Management (AM) styles.

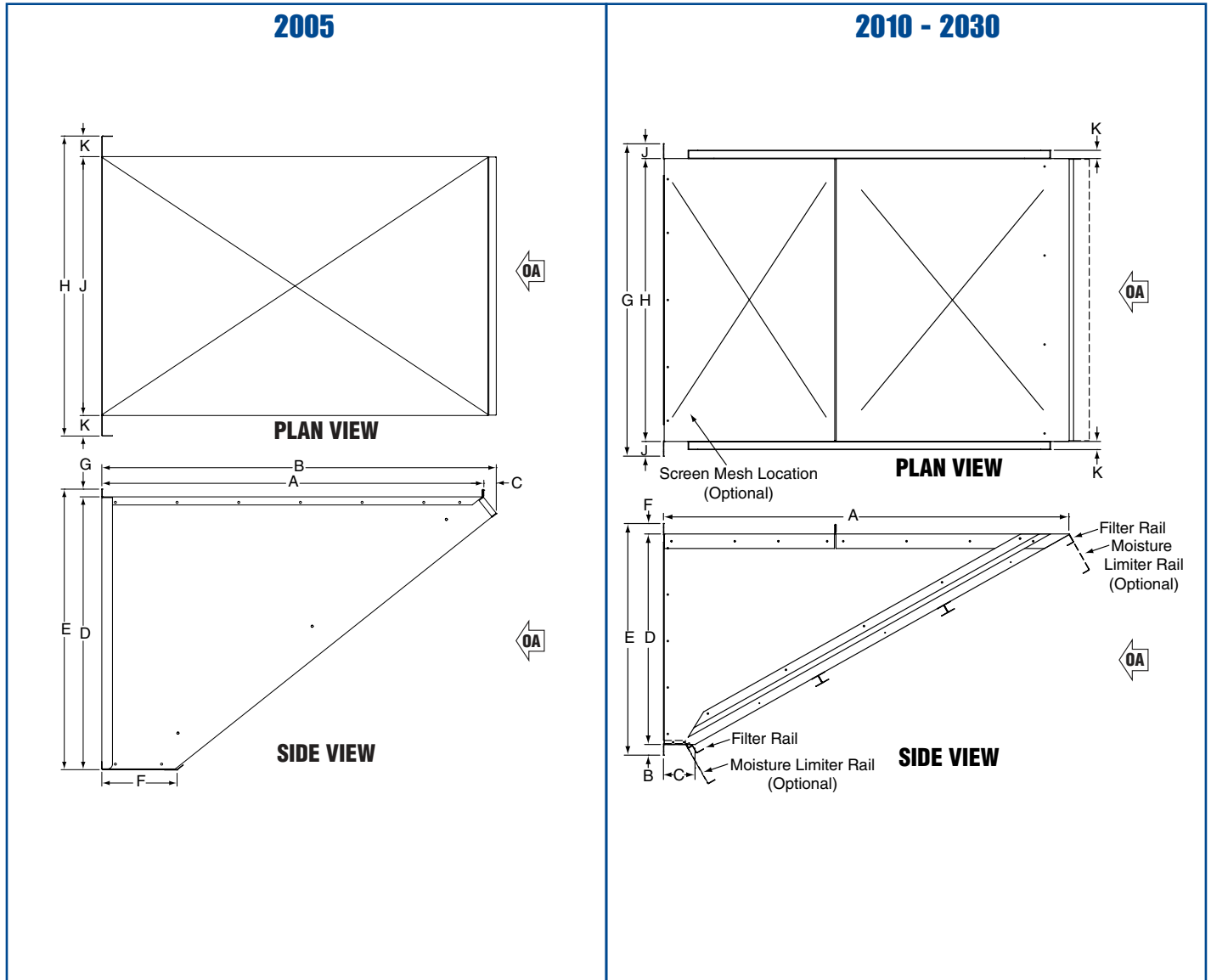
LEGEND	
<b>BD</b> = Bottom Discharge	<b>OA</b> = Outside Air
<b>CE</b> = Control Enclosure	<b>RA</b> = Return Air (Optional)
<b>GC</b> = Gas Connection	<b>RD</b> = Right Discharge
<b>ED</b> = End Discharge	<b>TD</b> = Top Discharge
<b>LD</b> = Left Discharge	<b>OH</b> = Opposite Hand



## IMPORTANT NOTES:

- Models 2010 - 2030 filter section is shipped unassembled.
- Models 2005 filter section is shipped assembled.

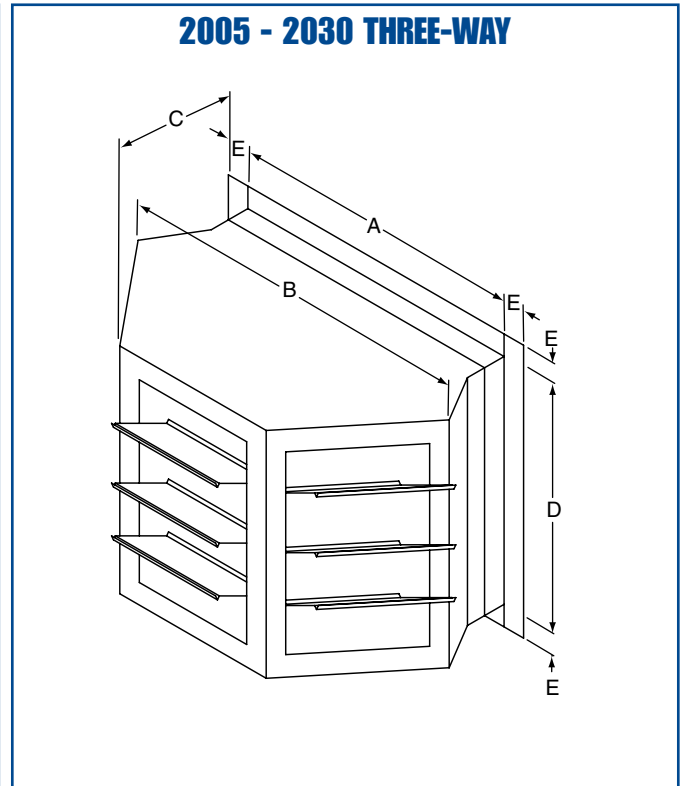
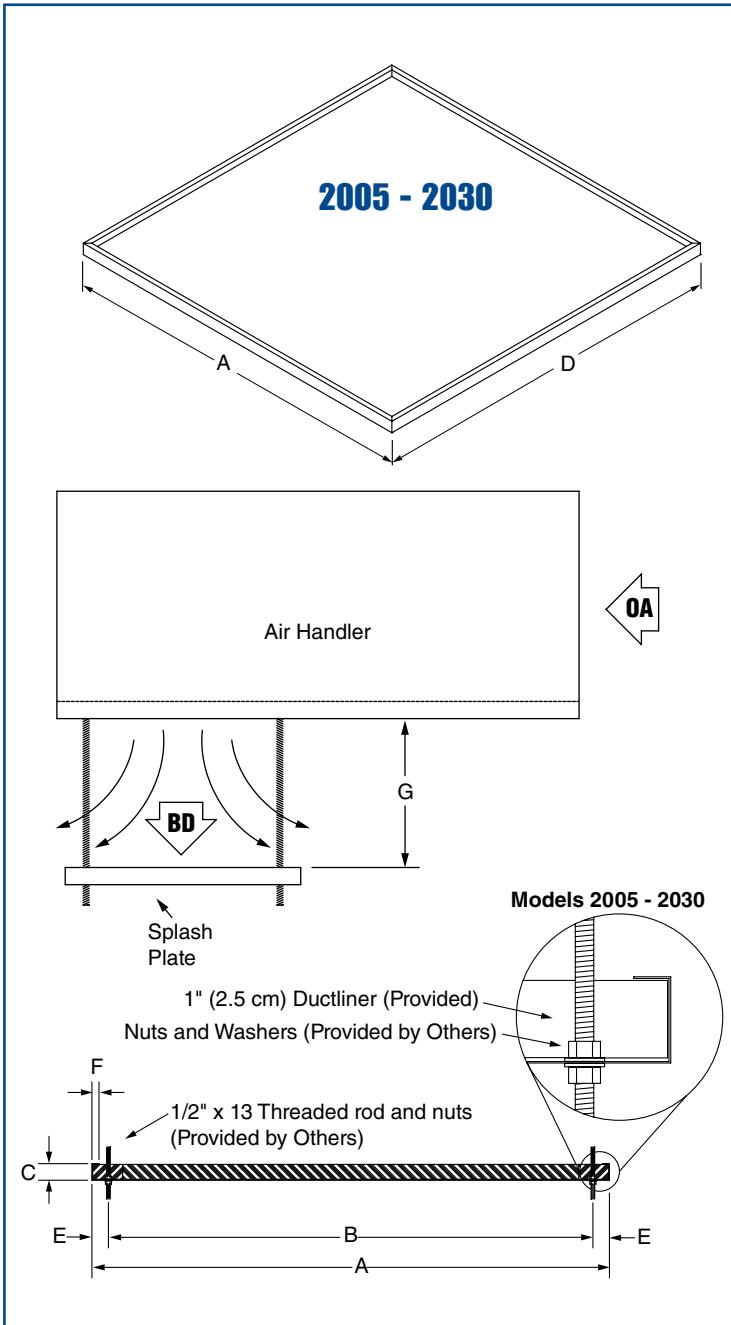
DIMENSIONS										FILTERS				WEIGHT	
										PERMANENT ALUMINUM MESH		DISPOSABLE POLYESTER			
Model		A	B	C	D	E	F	G	H	Size	Qty	Size	Qty	lbs	kg
2005	(in) (cm)	28.3 71.9	27.0 68.6	32.3 82.1	N/A	N/A	N/A	N/A	N/A	20 x 25 x 2 50.8 x 63.5 x 5.1	2	20 x 50 x 1 50.8 x 127 x 2.5	1	100.0	45.4
2010/2010B	(in) (cm)	38.8 98.6	43.4 110.2	2.3 5.9	28.8 73.2	32.7 83.1	1.9 4.9	34.0 86.3	0.5 1.3	20 x 20 x 1 50.8 x 50.8 x 2.5	8	20 x 40 x 1 50.8 x 101.6 x 2.5	4	100.0	45.4
2020	(in) (cm)	49.7 126.2	55.7 141.5	3.0 7.6	52.8 134.1	55.7 141.5	1.4 3.6	31.0 78.7	0.4 1.0	20 x 25 x 1 50.8 x 63.5 x 2.5	12	20 x 50 x 1 50.8 x 127 x 2.5	6	220.0	99.8
2030	(in) (cm)	64.1 162.8	68.3 173.5	2.1 5.3	56.8 144.3	60.7 154.2	1.9 4.8	31.0 78.7	0.4 1.0	20 x 20 x 1 & 20 x 25 x 1 50.8 x 50.8 x 2.5 & 50.8 x 63.5 x 2.5	16 & 8	20 x 60 x 1 50.8 x 152.4 x 2.5	8	270.0	122.5



### IMPORTANT NOTES:

- Inlet hood also available with screen mesh, no filters. Weight equals filtered variation. Screen location varies by model.
- Inlet hood is shipped unassembled.

DIMENSIONS											PERMANENT ALUMINUM MESH FILTERS		WEIGHT		MOISTURE LIMITER		WEIGHT		
Model		A	B	C	D	E	F	G	H	J	K	Size	Qty	lbs	kg	Size	Qty	lbs	kg
2005	(in) (cm)	37.2 94.5	38.4 97.5	1.2 3.0	26.4 67.1	27.3 69.3	7.3 18.5	0.9 2.3	29.2 74.2	25.0 63.5	2.1 5.3	20 x 25 x 2 50.8 x 63.5 x 5.1	2	60.0	27.2	N/A	N/A	N/A	N/A
2010/ 2010B	(in) (cm)	56.4 143.2	1.5 3.8	4.3 10.9	29.0 73.7	31.9 81.0	1.4 3.6	43.0 109.0	38.8 98.6	2.0 5.1	1.1 2.8	20 x 20 x 1 50.8 x 50.8 x 2.5	6	110.0	49.9	12 x 60 x 5.5 30.5 x 152.4 x 14.0	3	120.0	54.4
2020	(in) (cm)	89.3 226.8	1.3 3.3	5.0 12.7	52.8 134.1	55.3 140.5	1.3 3.3	52.1 132.3	49.7 126.2	1.2 3.0	1.1 2.8	20 x 25 x 1 50.8 x 63.5 x 2.5	10	190.0	86.2	12 x 96 x 5.5 30.5 x 243.8 x 14.0	4	210.0	95.3
2030	(in) (cm)	86.9 220.7	1.3 3.3	4.7 11.9	56.8 144.3	59.3 150.6	1.3 3.3	66.8 169.7	64.1 162.8	1.3 3.3	1.1 2.8	20 x 20 x 1 & 20 x 25 x 1 50.8 x 50.8 x 2.5 & 50.8 x 63.5 x 2.5	10 & 5	240.0	108.9	12 x 96 x 5.5 30.5 x 243.8 x 14.0	5	260.0	117.9



DIMENSIONS						WEIGHT		
Model		A	B	C	D	E	lbs	kg
2005	(in)	19.0	40.8	23.8	21.0	2.0	50.0	22.7
	(cm)	48.3	103.5	60.3	53.3	5.1		
2010/2010B	(in)	22.4	40.8	24.0	19.4	2.0	80.0	36.3
	(cm)	56.9	103.5	61.0	49.3	5.1		
2020	(in)	31.9	43.3	21.5	33.9	2.0	120.0	54.4
	(cm)	81.0	109.9	54.6	86.1	5.1		
2030	(in)	36.9	48.3	22.5	36.9	2.0	160.0	72.6
	(cm)	93.7	122.6	57.2	93.7	5.1		

### IMPORTANT NOTES:

- Discharge head must be field supported by others.
- Discharge head has manually adjustable horizontal blades.

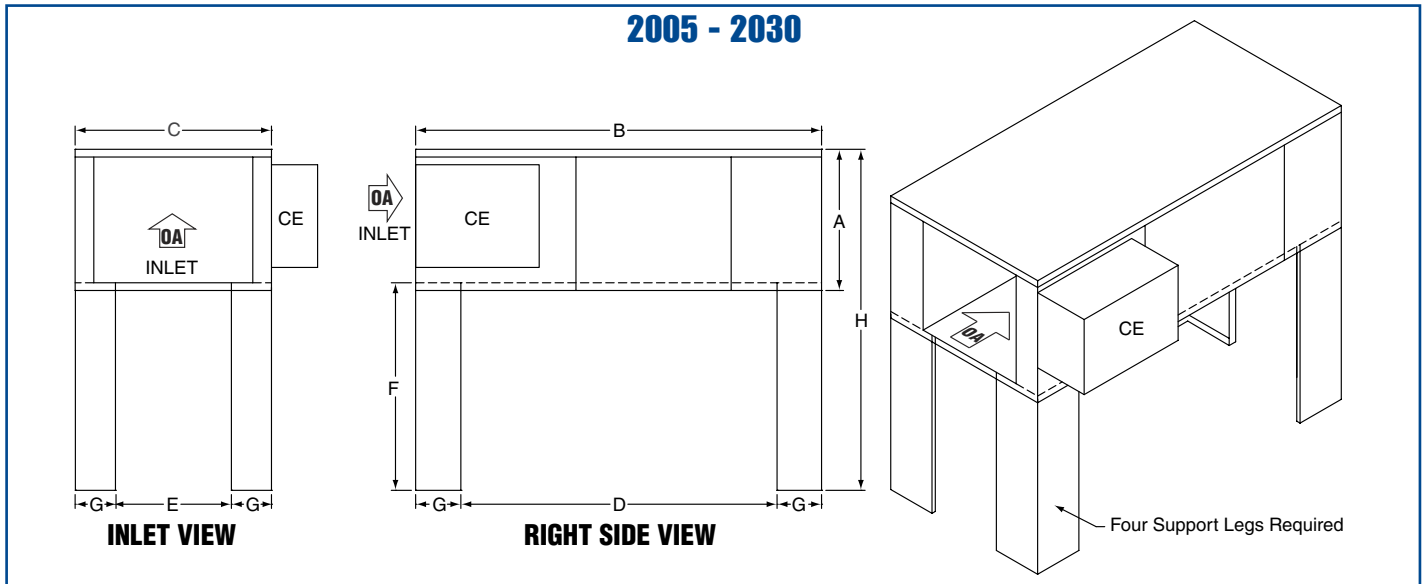
### IMPORTANT NOTES:

- 2005 - 2030 require four threaded rods.

DIMENSIONS										WEIGHT		
Model		A	B	C	D	E	F	G (min)	G (max)	H	lbs	kg
2005	(in)	22.0	19.5	0.9	25.0	1.3	0.6	15.0	20.0	N/A	20.0	9.1
	(cm)	55.9	49.5	2.2	63.5	3.2	1.6	38.1	50.8			
2010/2010B	(in)	44.0	41.5	0.9	44.0	1.3	0.6	18.0	27.0	N/A	40.0	18.1
	(cm)	111.8	105.4	2.2	111.8	3.2	1.6	47.5	68.6			
2020	(in)	54.8	51.3	1.8	54.8	1.8	0.8	25.0	38.0	N/A	60.0	27.2
	(cm)	139.1	130.2	4.4	139.1	4.4	2.0	63.5	96.5			
2030	(in)	54.8	51.3	1.8	54.8	1.8	0.8	30.0	45.0	N/A	60.0	27.2
	(cm)	139.1	130.2	4.4	139.1	4.4	2.0	76.2	114.3			



## 2005 - 2030

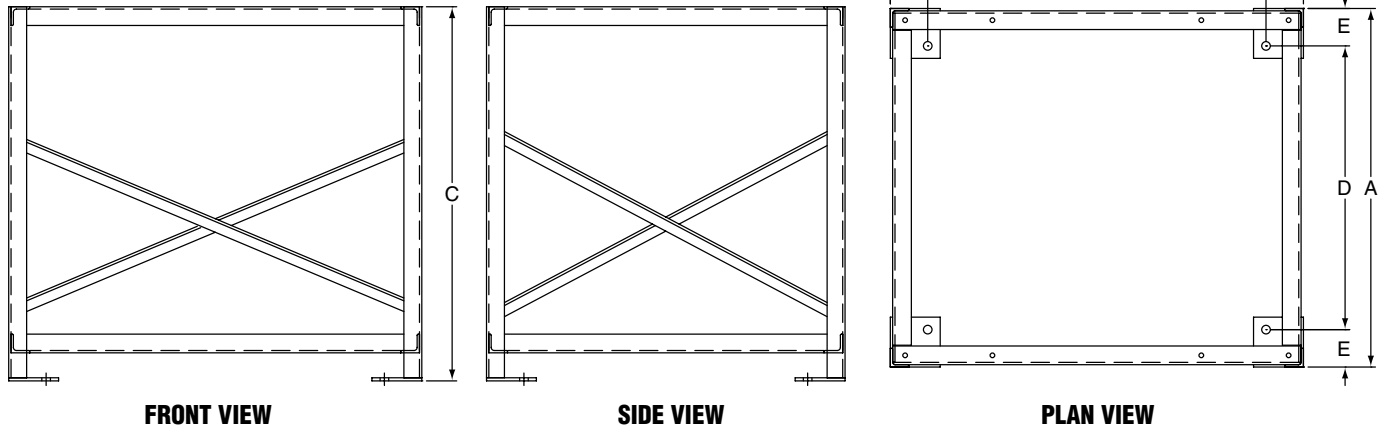


DIMENSIONS										WEIGHT (EACH LEG)	
Model		A	B	C	D	E	F	G	H	lbs	kg
2005 (See Note)	(in)	28.3	60.3	32.3	31.1	3.1	46.0	14.6	72.5	26.0	11.8
	(cm)	71.9	153.2	82.0	79.0	7.9	116.8	37.1	184.2		
2010/2010B	(in)	32.7	92.3	44.2	63.1	15.0	46.0	14.6	77.2	26.0	11.8
	(cm)	83.1	234.4	112.3	160.3	38.1	116.8	37.1	196.1		
2020	(in)	56.1	116.1	56.0	86.9	26.8	46.0	14.6	100.1	26.0	11.8
	(cm)	142.5	294.9	142.2	220.7	68.1	116.8	37.1	254.3		
2030	(in)	60.1	116.1	68.0	96.9	38.8	46.0	14.6	104.1	26.0	11.8
	(cm)	152.7	294.9	172.7	220.7	98.6	116.8	37.1	264.4		

### IMPORTANT NOTES:

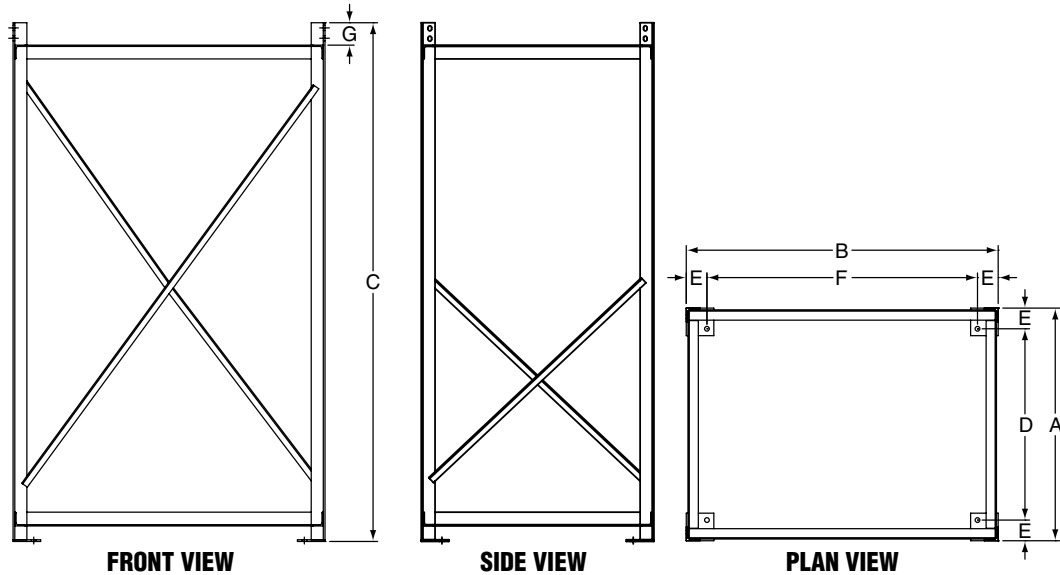
- 2005 control enclosure is located on left side of air handler when looking downstream into inlet end.

### 2005 30" STAND



DIMENSIONS								WEIGHT	
Model		A	B	C	D	E	F	lbs	kg
2005	(in) (cm)	28.8 73.0	33.1 84.1	30.0 76.2	22.8 57.8	3.0 7.6	27.1 68.9	75.0	34.0

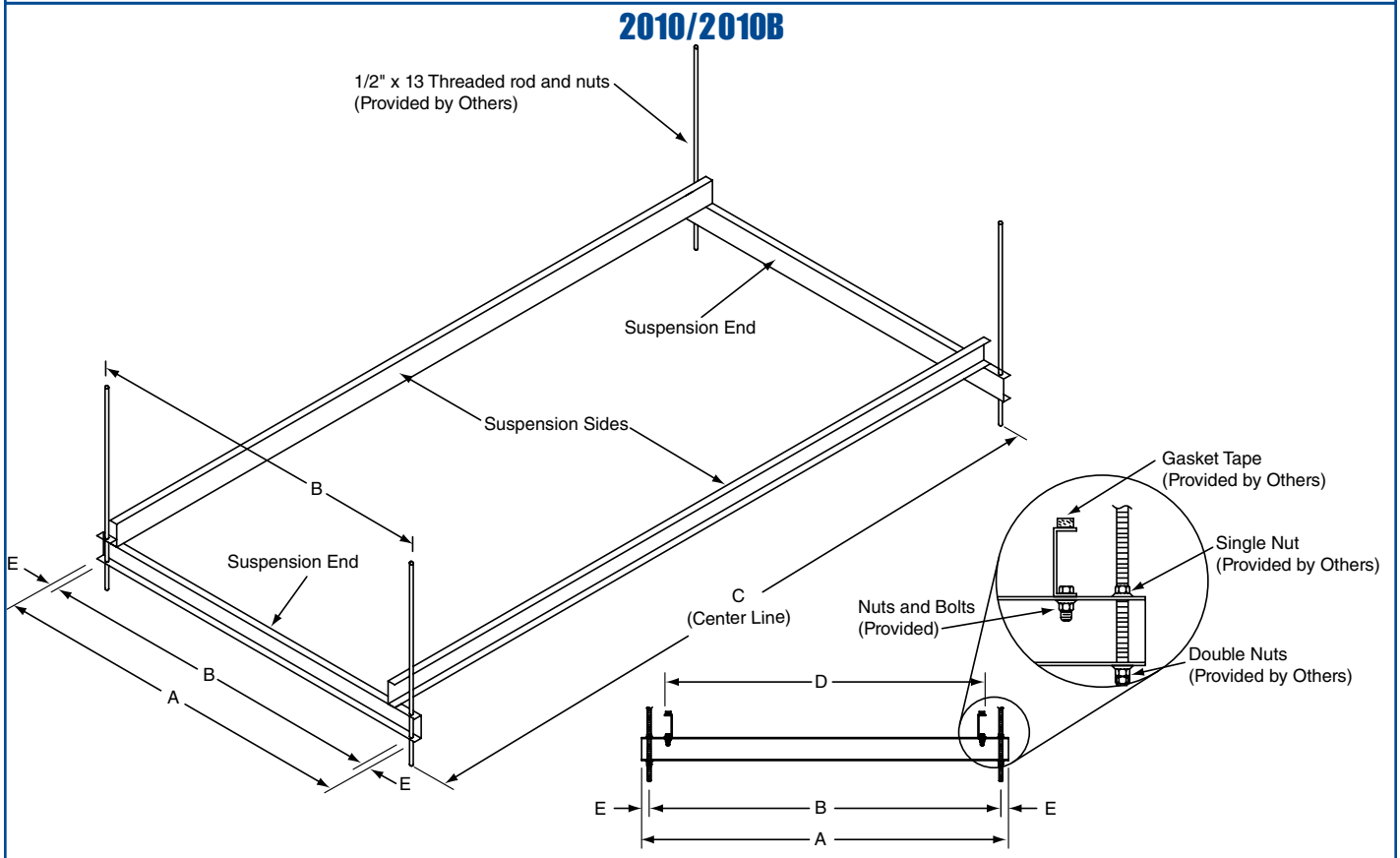
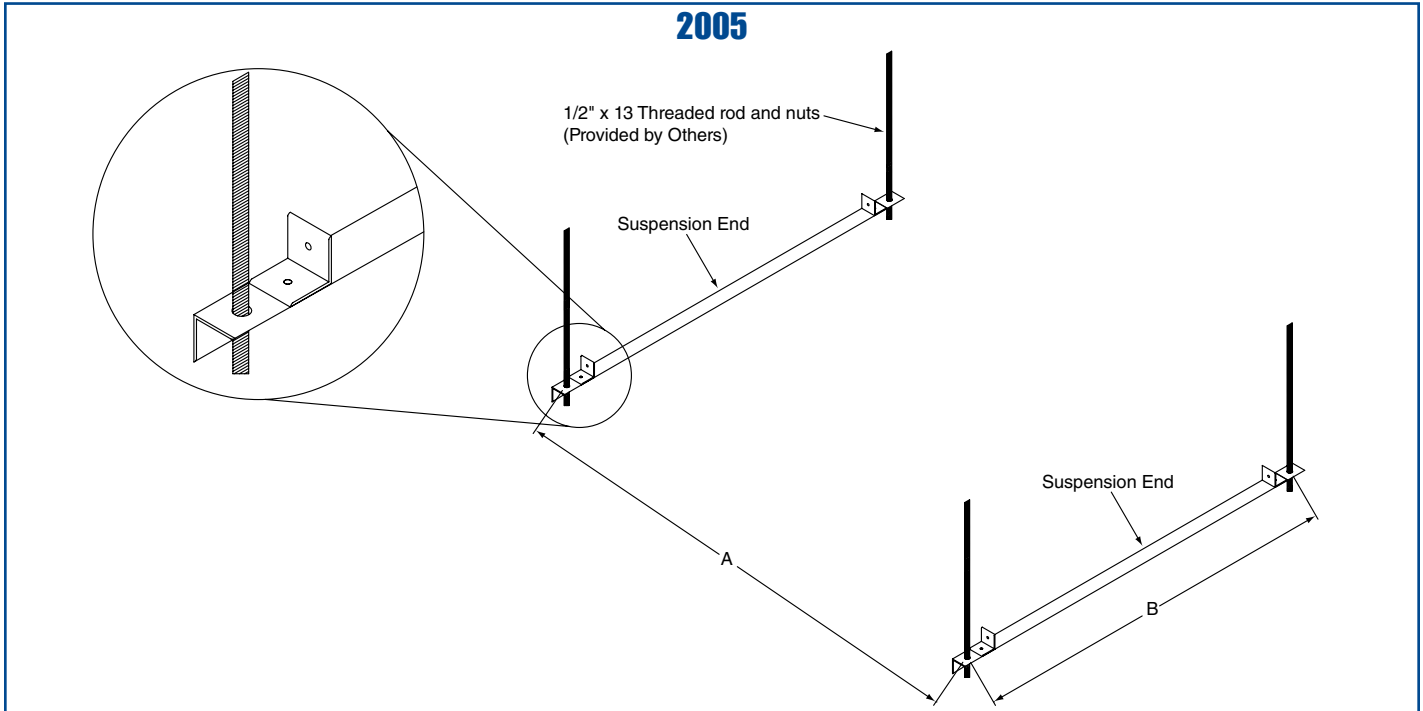
### 2010 - 2030 53"/72" STAND



DIMENSIONS									WEIGHT	
Model		A	B	C	D	E	F	G	lbs	kg
2010/2010B (53")	(in) (cm)	33.8 85.7	45.3 114.9	56.3 142.9	27.8 70.5	3.0 7.6	39.3 99.7	3.3 8.3	160.0	72.6
2010/2010B (72")	(in) (cm)	33.8 85.7	45.3 114.9	75.3 191.1	27.8 70.5	3.0 7.6	32.5 82.6	3.3 8.3	190.0	86.2
2020	(in) (cm)	57.5 146.1	57.5 146.1	75.3 191.1	51.1 129.8	3.0 7.6	51.5 130.8	3.3 8.3	230.0	104.3
2030	(in) (cm)	69.5 176.5	61.8 156.8	75.3 191.1	63.5 161.3	3.0 7.6	55.8 141.6	3.3 8.3	300.0	136.1

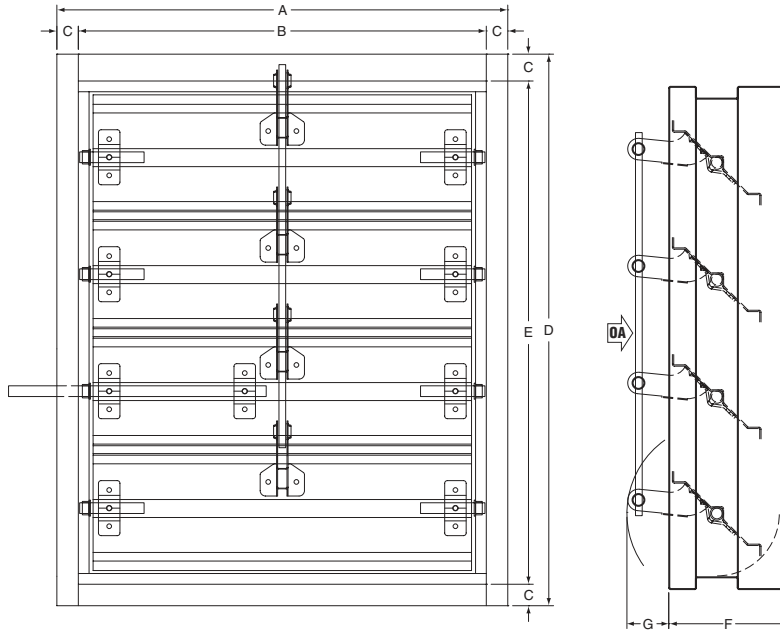
#### IMPORTANT NOTES:

- 1/4" angle iron construction.

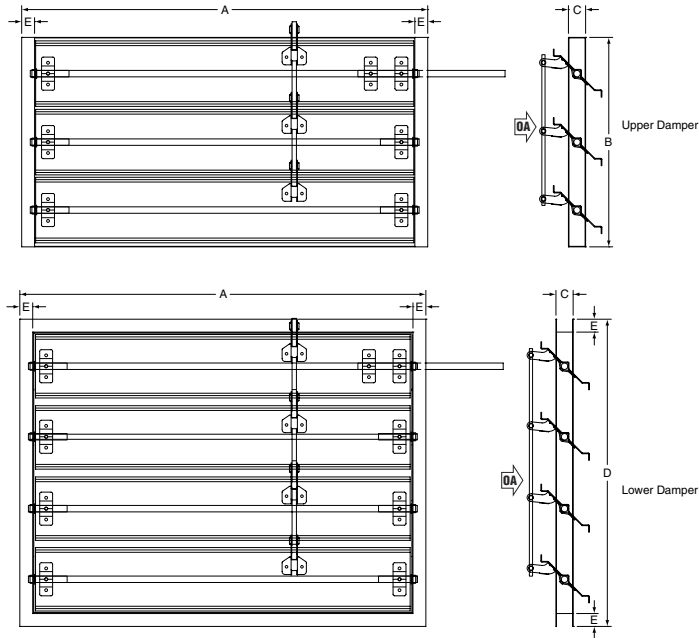


DIMENSIONS							WEIGHT	
Model		A	B	C	D	E	lbs	kg
2005	(in) (cm)	59.3 73.0	36.5 84.1	N/A	N/A	N/A	13.0	5.9
2010/2010B	(in) (cm)	48.0 121.9	46.0 116.8	90.0 228.6	42.0 106.7	1.0 2.5	140.0	63.5

### 2005 - 2010B



### 2020/2030

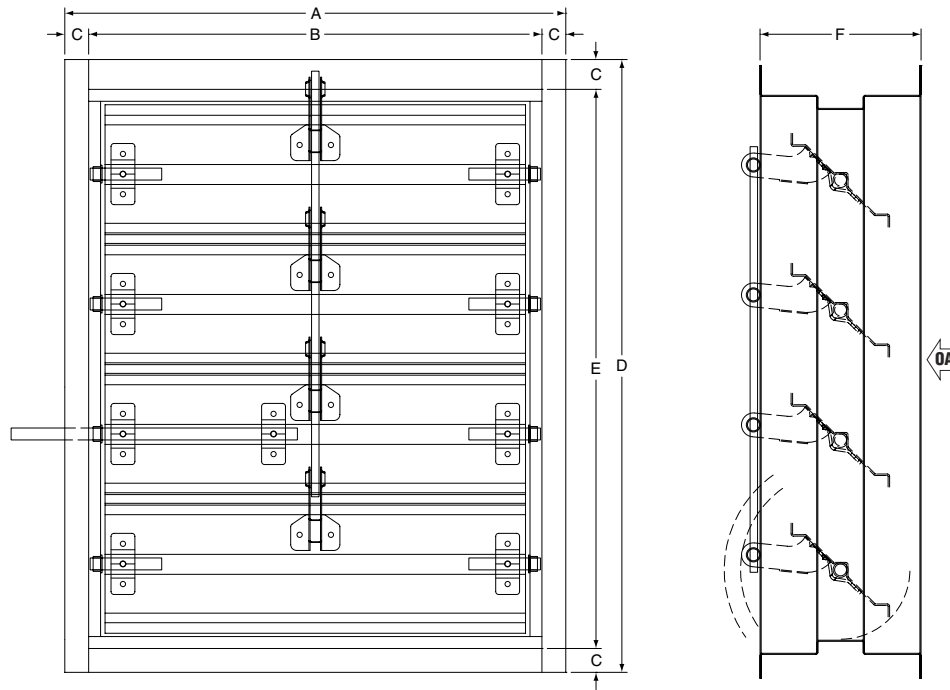


Model	Damper	Weight*	
		lbs	kg
2020	UPPER	34.0	15.4
	LOWER	41.0	18.6
2030	UPPER	46.0	20.9
	LOWER	61.0	27.7

DIMENSIONS									WEIGHT	
Model		A	B	C	D	E	F	G	lbs	kg
2005	(in)	21.0	19.0	1.3	25.7	23.4	5.0	3.3	40.0	18.1
	(cm)	53.3	48.3	3.3	65.2	59.5	12.7	8.3		
2010/ 2010B	(in)	33.3	30.8	1.3	29.0	26.3	5.0	3.3	60.0	27.2
	(cm)	84.5	78.1	3.2	73.7	66.7	12.7	8.3		
2020	(in)	47.3	24.4	2.0	29.5	1.5	N/A	N/A	*	*
	(cm)	120.0	63.0	5.1	74.9	3.8				
2030	(in)	59.3	24.4	2.0	33.5	1.5	N/A	N/A	*	*
	(cm)	150.6	63.0	5.1	85.1	3.8				

\*Refer to chart above for 2020 and 2030 weights.

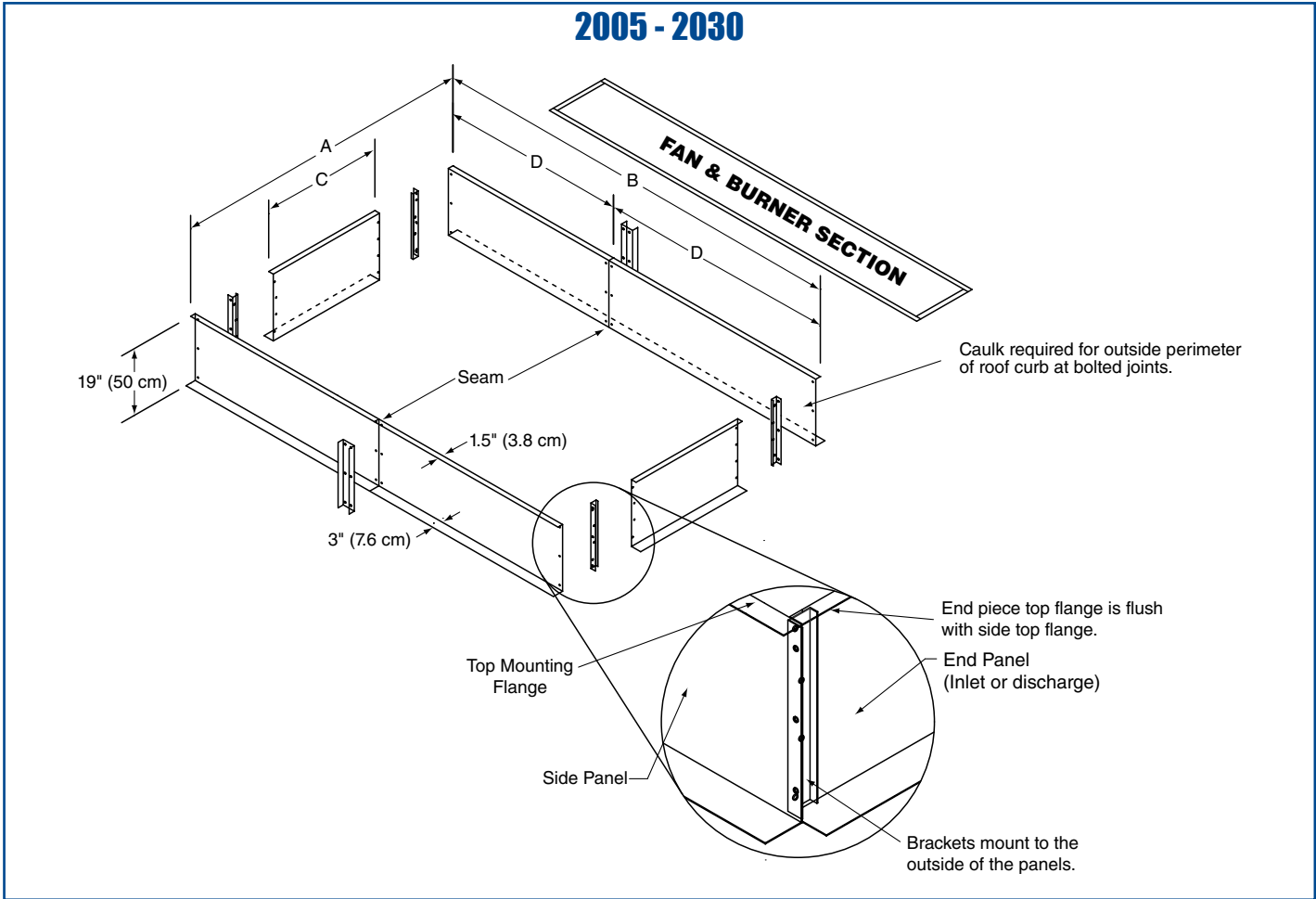
## 2005 - 2030



Model		DIMENSIONS						WEIGHT	
		A	B	C	D	E	F	lbs	kg
2005	(in) (cm)	21.0 53.3	19.0 48.3	1.0 2.5	19.0 48.3	17.0 43.2	9.0 22.9	40.0	18.1
2010/ 2010B	(in) (cm)	27.0 68.6	25.0 63.5	1.0 2.5	23.5 59.7	21.5 54.6	8.0 20.3	60.0	27.2
2020	(in) (cm)	37.0 94.0	34.0 86.4	1.5 3.8	36.0 42.0	33.0 83.8	10.0 25.4	100.0	45.4
2030	(in) (cm)	42.0 106.7	39.0 99.1	1.5 3.8	42.0 106.7	39.0 99.1	10.0 25.4	150.0	68.0

### IMPORTANT NOTES:

- Number of louvers will vary by model.
- Inlet dampers are mounted upstream of air handler, directly to air handler.
- Inlet dampers also available to ship loose.
- Inlet dampers for MUA style use both upper and lower dampers for 2020 and 2030.
- Inlet dampers for FR, AM and VAV styles only use upper damper for 2020 and 2030.
- Discharge dampers do not mount directly to air handler; they mount downstream of air handler in ductwork.



DIMENSIONS					WEIGHT		
Model		A	B	C	D	lbs	kg
2005	(in) (cm)	27.0 68.6	57.5 146.1	23.8 60.5	N/A	75.0	34.0
2010/2010B	(in) (cm)	42.0 106.7	88.0 223.5	38.8 98.6	N/A	110.0	49.9
2020	(in) (cm)	53.0 134.6	113.0 287.0	49.8 126.5	56.5 143.5	150.0	68.0
2030	(in) (cm)	65.0 165.1	113.0 287.0	61.8 157.0	56.5 143.5	160.0	72.6

## IMPORTANT NOTES:

- Curb is shipped unassembled.
- All dimensions are from the outside.
- Curb material is 16 gauge galvanized steel.
- Nuts and bolts (3/8" x 1") are furnished.
- Caulk all joints before assembling. (Caulk provided by others).
- 2020 and 2030 have seam in roof curb.
- When measuring dimensions A and B, include top mounting flange width on both sides.

# 2000-Series Selection Guide



Airflow CFM (m <sup>3</sup> /h)	Model	Motor HP at Noted External Static Pressure (in wc)					dBA at Noted External Static Pressure (in wc)**			Heat Output at Maximum Temperature Rise (Btu/h) X 1000		Minimum Inlet Gas Pressure in wc (mbar)***	Manifold Size in NPT (mm)
		0	0.25	0.50	0.75	1.00	0	0.50	1.00	NG	LPG		
1,000 (1,700)	2005	2	2	2	2	2	62	66	70	97	76	7 (17.5)	0.75 (19)
2,000 (3,400)	2005	2	2	2	2	2	60	66	70	194	151	7 (17.5)	0.75 (19)
3,000 (5,100)	2005	3	3	3	3	3	60	65	70	292	227	7 (17.5)	0.75 (19)
4,000 (6,800)	2005	3	3	3	3	3	62	65	70	389*	302	7 (17.5)	0.75 (19)
4,000 (6,800)	2010	3	3	3	3	3	59	65	69	432	346	7 (17.5)	1.0 (25)
5,000 (8,500)	2010	3	3	3	3	3	58	63	68	540	432	7 (17.5)	1.0 (25)
6,000 (10,200)	2010	5	5	5	5	5	58	62	67	648	518	7 (17.5)	1.0 (25)
7,000 (11,900)	2010	5	5	5	5	5	59	62	66	756	605	7 (17.5)	1.0 (25)
8,000 (13,600)	2010	5	5	5	5	5	60	63	66	800*	691	7 (17.5)	1.0 (25)
9,000 (15,300)	2010	7.5	7.5	7.5	7.5	7.5	61	64	67	800*	778	7 (17.5)	1.0 (25)
10,000 (17,000)	2010	7.5	7.5	7.5	7.5	7.5	62	65	68	800*	800	7 (17.5)	1.0 (25)
7,000 (11,900)	2010B	5	5	5	5	5	59	62	66	756	605	7 (17.5)	1.25 (32)
8,000 (13,600)	2010B	5	5	5	5	5	60	63	66	864	691	7 (17.5)	1.25 (32)
9,000 (15,300)	2010B	7.5	7.5	7.5	7.5	7.5	61	64	67	972	778	7 (17.5)	1.25 (32)
10,000 (17,000)	2010B	7.5	7.5	7.5	7.5	7.5	62	65	68	1,080	864	7 (17.5)	1.25 (32)
11,000 (18,700)	2010B	10	10	10	10	10	64	66	68	1,188	950	7 (17.5)	1.25 (32)
12,000 (20,400)	2010B	10	10	10	10	10	66	68	69	1,296	1,037	7 (17.5)	1.25 (32)
13,000 (22,100)	2010B	10	10	10	10	15	67	69	CF	1,404	1,123	7 (17.5)	1.25 (32)
14,000 (23,800)	2010B	10	10	15	15	15	69	CF	CF	1,512	1,210	7 (17.5)	1.25 (32)
12,000 (20,400)	2020	7.5	7.5	7.5	7.5	7.5	66	70	73	1,296	1,037	9 (22.5)	1.5 (38)
14,000 (23,800)	2020	10	10	10	10	10	69	70	73	1,512	1,210	9 (22.5)	1.5 (38)
16,000 (27,200)	2020	10	10	10	10	10	70	72	76	1,728	1,382	9 (22.5)	1.5 (38)
18,000 (30,600)	2020	15	15	15	15	15	70	74	77	1,944	1,555	9 (22.5)	1.5 (38)
20,000 (34,000)	2020	15	15	15	15	15	70	74	77	2,160	1,728	9 (22.5)	1.5 (38)
22,000 (37,400)	2020	20	20	20	20	20	71	74	77	2,376	1,901	9 (22.5)	1.5 (38)
25,000 (42,500)	2020	20	20	20	20	20	72	75	77	2,700	2,160	9 (22.5)	1.5 (38)
25,000 (42,500)	2030	15	15	15	15	15	70	72	74	2,700	2,160	11 (27.5)	2.0 (51)
27,500 (46,700)	2030	15	15	15	15	15	71	73	75	2,970	2,376	11 (27.5)	2.0 (51)
30,000 (51,000)	2030	20	20	20	25	25	73	75	76	3,240	2,592	11 (27.5)	2.0 (51)
32,500 (55,200)	2030	20	20	20	20	25	75	76	77	3,510	2,808	11 (27.5)	2.0 (51)
35,000 (59,500)	2030	20	25	25	25	25	77	77	79	3,780	3,024	11 (27.5)	2.0 (51)
37,500 (63,700)	2030	25	25	30	30	30	78	79	79	4,050*	3,240	11 (27.5)	2.0 (51)
40,000 (68,000)	2030	30	30	30	CF	CF	80	CF	CF	4,320*	3,456	11 (27.5)	2.0 (51)

## IMPORTANT NOTES:

All information provided in this table is based on the assumption that unit is installed at an altitude below 2000 feet (609.6 meters).

CF = Consult Factory

\*Temperature rise at this CFM is less than maximum temperature rise. Heat output is based on heater operation in 100% outside air mode.

\*\* dBA is measured at 10' (3 m) from unducted discharge.

\*\*\* Maximum Inlet Gas Pressure: ANSI - Compliant Manifold = 14 in wc (34.9 mbar)  
FM and XL Compliant Manifold = 5 psi (344.7 mbar)

### **Installation Code and Annual Inspections:**

All installation and service of RAPID® equipment must be performed by a contractor qualified in the installation and service of equipment sold and supplied by Rapid Engineering LLC and conform to all requirements set forth in the Rapid Engineering LLC manuals and all applicable governmental authorities pertaining to the installation, service, operation and labeling of the equipment. To help facilitate optimum performance and safety, Rapid Engineering LLC recommends that a qualified contractor conduct, at a minimum, annual inspections of your RAPID® equipment and perform service where necessary, using only replacement parts sold and supplied by Rapid Engineering LLC.

**Further Information:** Applications, engineering and detailed guidance on systems design, installation and equipment performance is available through RAPID® representatives. Please contact us for any further information you may require, including the Installation, Operation and Service Manual.

**This product is not for residential use.**

**This document is intended to assist licensed professionals in the exercise of their professional judgment.**

### **Rapid Engineering LLC**

1100 Seven Mile Road NW  
Comstock Park, MI 49321  
Telephone: +1.616.784.0500  
Toll Free: 800.536.3461  
Fax: +1.616.784.0435

[www.rapidengineering.com](http://www.rapidengineering.com)

© 2016 Rapid Engineering LLC All rights reserved. No part of this work covered by the copyrights herein may be reproduced or copied in any form or by any means – graphic, electronic, or mechanical, including photocopying, recording, taping, or information storage and retrieval systems – without written permission of Rapid Engineering LLC.